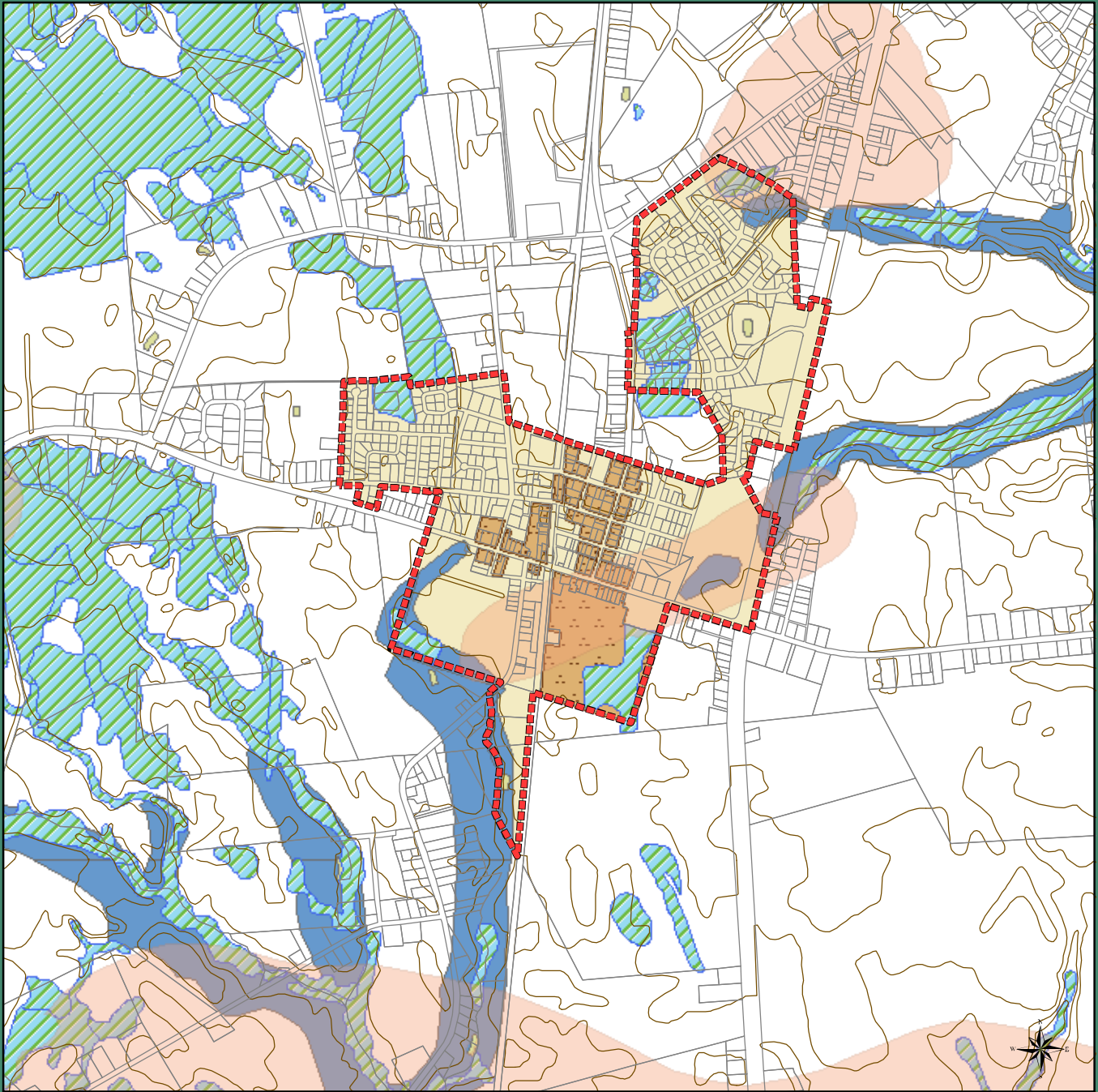

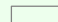
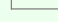
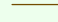

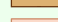



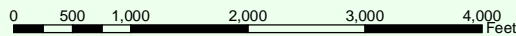
# Town of Felton



-  Municipal Boundary
-  Parcel Boundaries
-  Hypsography
-  Historic District
-  Excellent Recharge Areas
-  State Wetlands
-  FEMA Flood Plains - Zone A

*Map 6. Environmental Features*

April 2003



Sources:  
 Municipal Boundary - Office of State Planning and Coordination, 2002.  
 Parcel Boundaries - Kent County Planning Department, 2002.  
 Hydrology - USGS 7.5 Minute Series Topographic Maps. Created in cooperative agreement between the State of Delaware and the USGS (1991-1995).  
 Hypsography - Extracted from USGS Topographic Map Series, Delaware Geologic Survey, 2000.  
 Excellent Recharge Areas - Delaware Department of Natural Resources and Environmental Control, 2001.  
 Wetlands - State Wetlands Mapping Project, Delaware Department of Natural Resources and Environmental Control, 2001.  
 Historic District - Delaware State Historic Preservation Office, Division of Historical and Cultural Affairs, 2002.

Note:  
 This map is provided by the Institute for Public Administration (IPA) solely for display and reference purposes and is subject to change without notice. No claims, either real or assumed, as to the absolute accuracy or precision of any data contained herein are made by the IPA, nor will the IPA be held responsible for any use of this document for purposes other than which it was intended.

