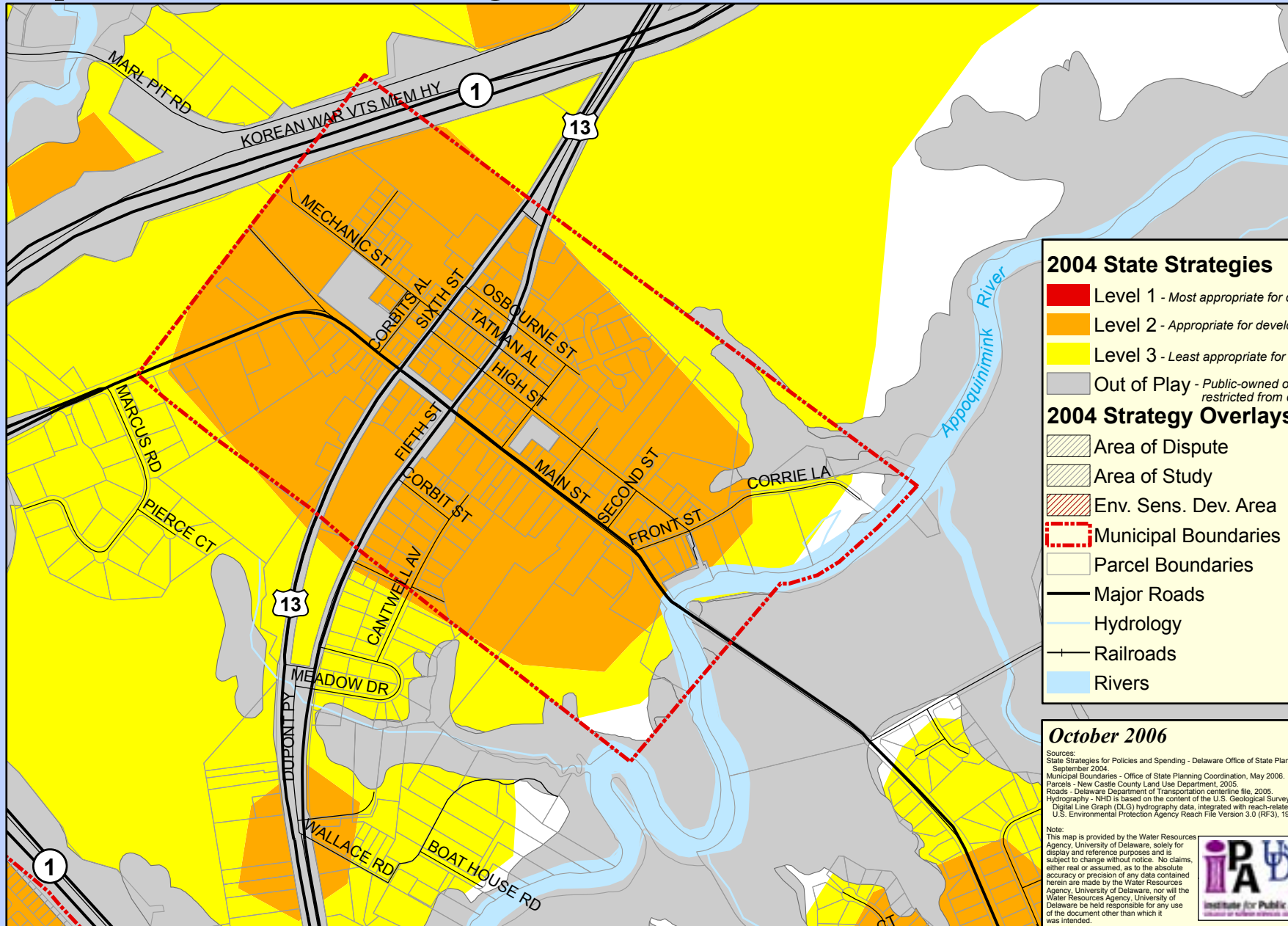


# Town of Odessa, Delaware

## Map 3. State Investment Strategies

0 290 580 1,160 1,740 2,320 Feet



### 2004 State Strategies

- Level 1 - Most appropriate for development
- Level 2 - Appropriate for development
- Level 3 - Least appropriate for development
- Out of Play - Public-owned or legally restricted from development

### 2004 Strategy Overlays

- Area of Dispute
- Area of Study
- Env. Sens. Dev. Area
- Municipal Boundaries
- Parcel Boundaries
- Major Roads
- Hydrology
- Railroads
- Rivers

**October 2006**

Sources:  
 State Strategies for Policies and Spending - Delaware Office of State Planning Coordination, September 2004.  
 Municipal Boundaries - Office of State Planning Coordination, May 2006.  
 Parcels - New Castle County Land Use Department, 2005.  
 Roads - Delaware Department of Transportation centerline file, 2005.  
 Hydrography - NHD is based on the content of the U.S. Geological Survey 1:100,000-scale Digital Line Graph (DLG) hydrography data, integrated with reach-related information from the U.S. Environmental Protection Agency Reach File Version 3.0 (RF3), 1999.

Note:  
 This map is provided by the Water Resources Agency, University of Delaware, solely for display and reference purposes and is subject to change without notice. No claims, either real or assumed, as to the absolute accuracy or precision of any data contained herein are made by the Water Resources Agency, University of Delaware, nor will the Water Resources Agency, University of Delaware be held responsible for any use of the document other than which it was intended.

