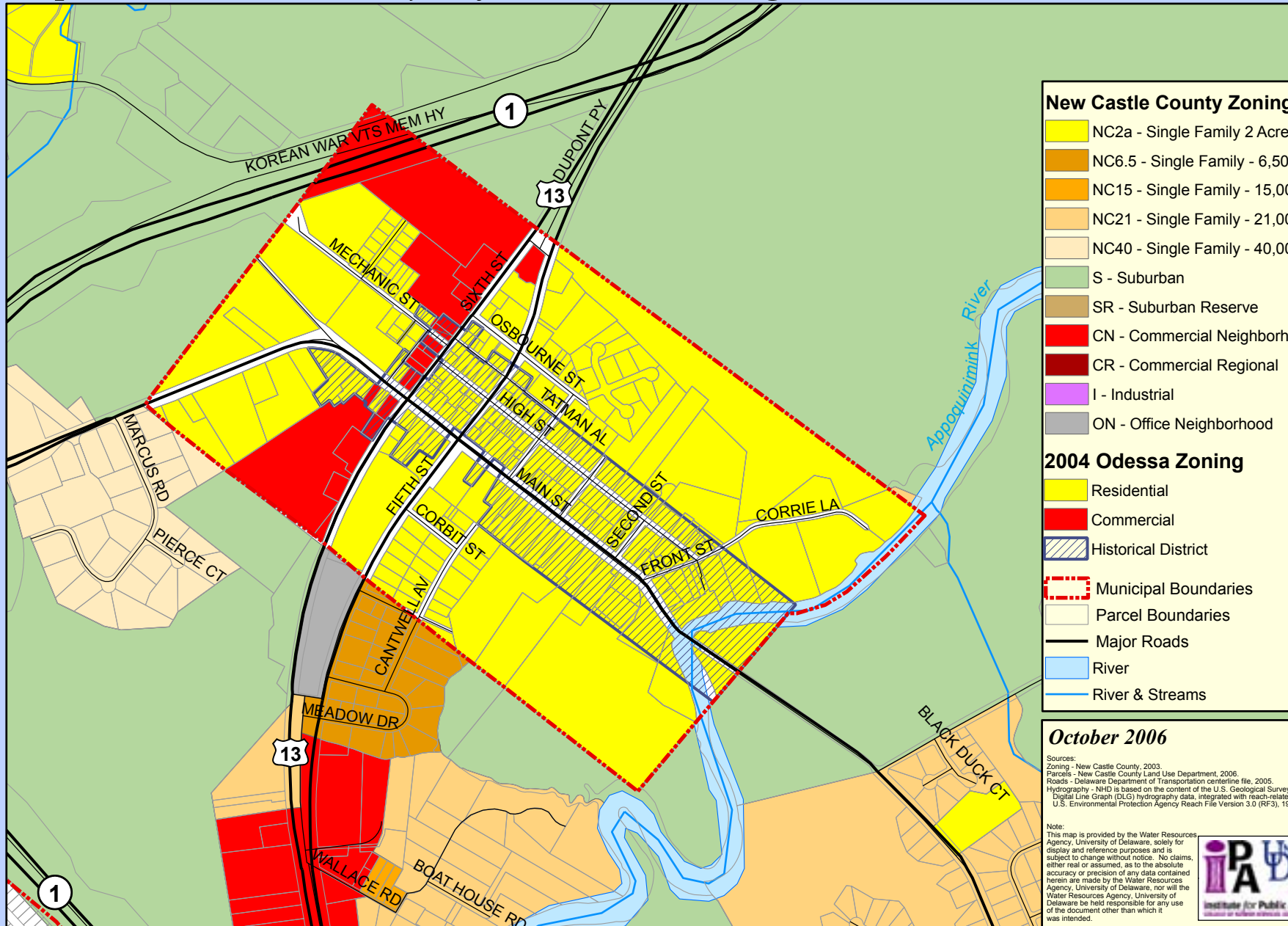


Town of Odessa, Delaware

Map 5. New Castle County Adjacent Area Zoning

0 290 580 1,160 1,740 2,320 Feet



New Castle County Zoning

- NC2a - Single Family 2 Acre Lots
- NC6.5 - Single Family - 6,500 sq.ft.lots
- NC15 - Single Family - 15,000 sq.ft.lots
- NC21 - Single Family - 21,000 sq.ft.lots
- NC40 - Single Family - 40,000 sq.ft.lots
- S - Suburban
- SR - Suburban Reserve
- CN - Commercial Neighborhood
- CR - Commercial Regional
- I - Industrial
- ON - Office Neighborhood

2004 Odessa Zoning

- Residential
- Commercial
- Historical District
- Municipal Boundaries
- Parcel Boundaries
- Major Roads
- River
- River & Streams

October 2006

Sources:
 Zoning - New Castle County, 2003.
 Parcels - New Castle County Land Use Department, 2006.
 Roads - Delaware Department of Transportation centerline file, 2005.
 Hydrography - NHD is based on the content of the U.S. Geological Survey 1:100,000-scale Digital Line Graph (DLG) hydrography data, integrated with reach-related information from the U.S. Environmental Protection Agency Reach File Version 3.0 (RF3), 1999.

Note:
 This map is provided by the Water Resources Agency, University of Delaware, solely for display and reference purposes and is subject to change without notice. No claims, either real or assumed, as to the absolute accuracy or precision of any data contained herein are made by the Water Resources Agency, University of Delaware, nor will the Water Resources Agency, University of Delaware be held responsible for any use of the document other than which it was intended.

