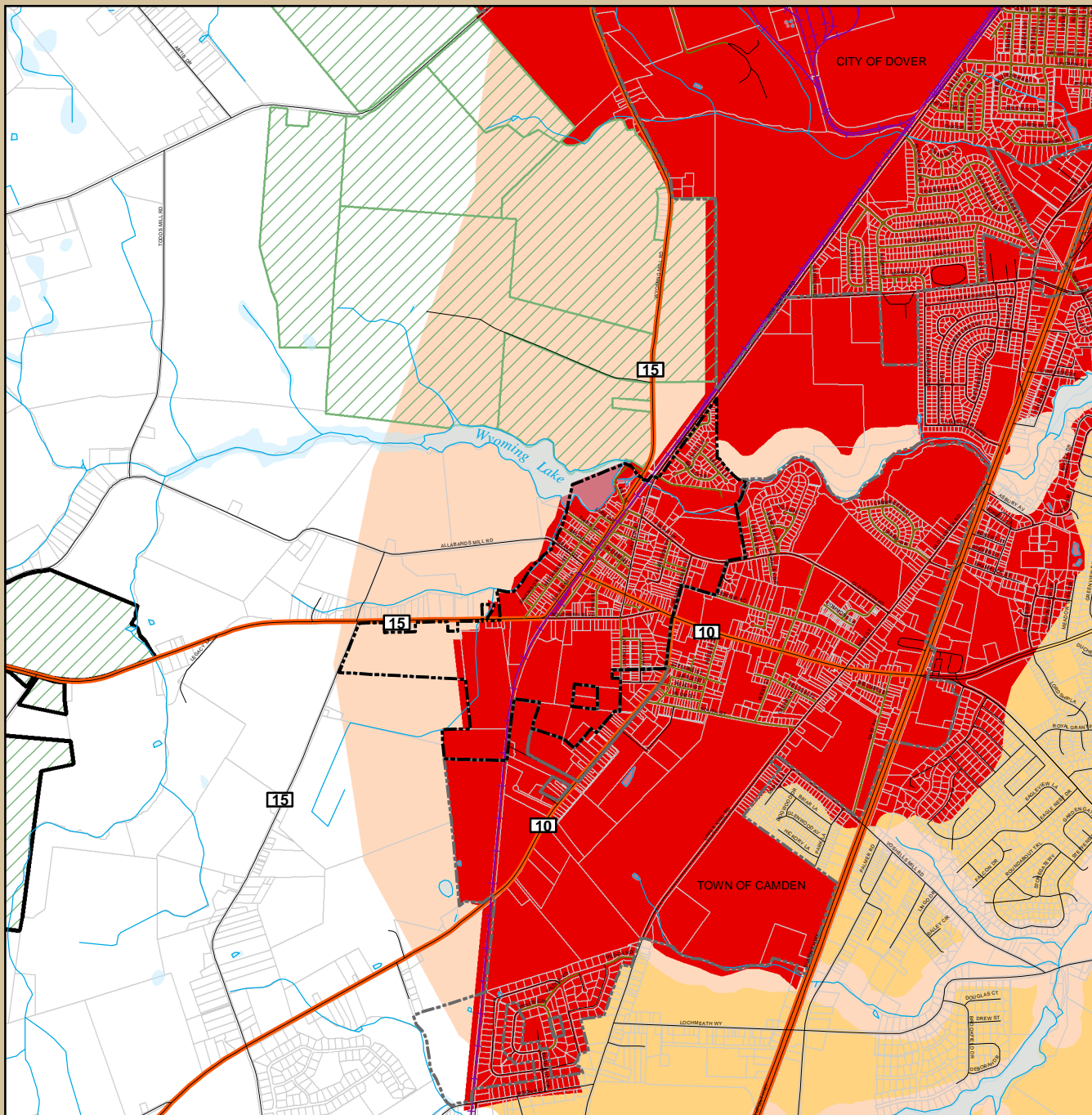




Town of Wyoming

Kent County, Delaware

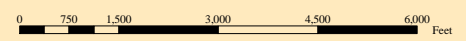
Map 6. State Strategy Designation Within Study Area



- Town of Wyoming
- Other Municipalities
- Community
- Developing Area
- Rural
- Secondary
- Agricultural Districts
- Agricultural PDRs
- Parcel Boundaries
- Roads
- Municipal Roads
- State Roads
- Railroads
- Hydrology
- Lakes, Ponds, & Rivers



January 2004



Sources:
 State Investment Strategies - Office of State Planning & Coordination, 2002.
 Agricultural Districts and Purchased Development Rights - Delaware Department of Agriculture (DDA), March 06, 2003.
 Parcels - Kent County Planning Office, 2002.
 Base map - Delaware Department of Transportation contourline file 2001. Created from Digital Orthophoto Quarter Quads (1997).
 Hydrology - USGS 7.5 Minute Series Topographic Maps. Created in cooperative agreement between the State of Delaware and the USGS (1991-1993).
 Municipal Boundaries - Delaware Office of State Planning and Coordination, 2003.

Note:
 This map is provided by the Institute for Public Administration (IPA) solely for display and reference purposes and is subject to change without notice. No claims, either real or assumed, as to the absolute accuracy or precision of any data contained herein are made by the IPA, nor will the IPA be held responsible for any use of this document for purposes other than which it was intended.

