

# **Critical Economic and Demographic Trends 2005**

presented to

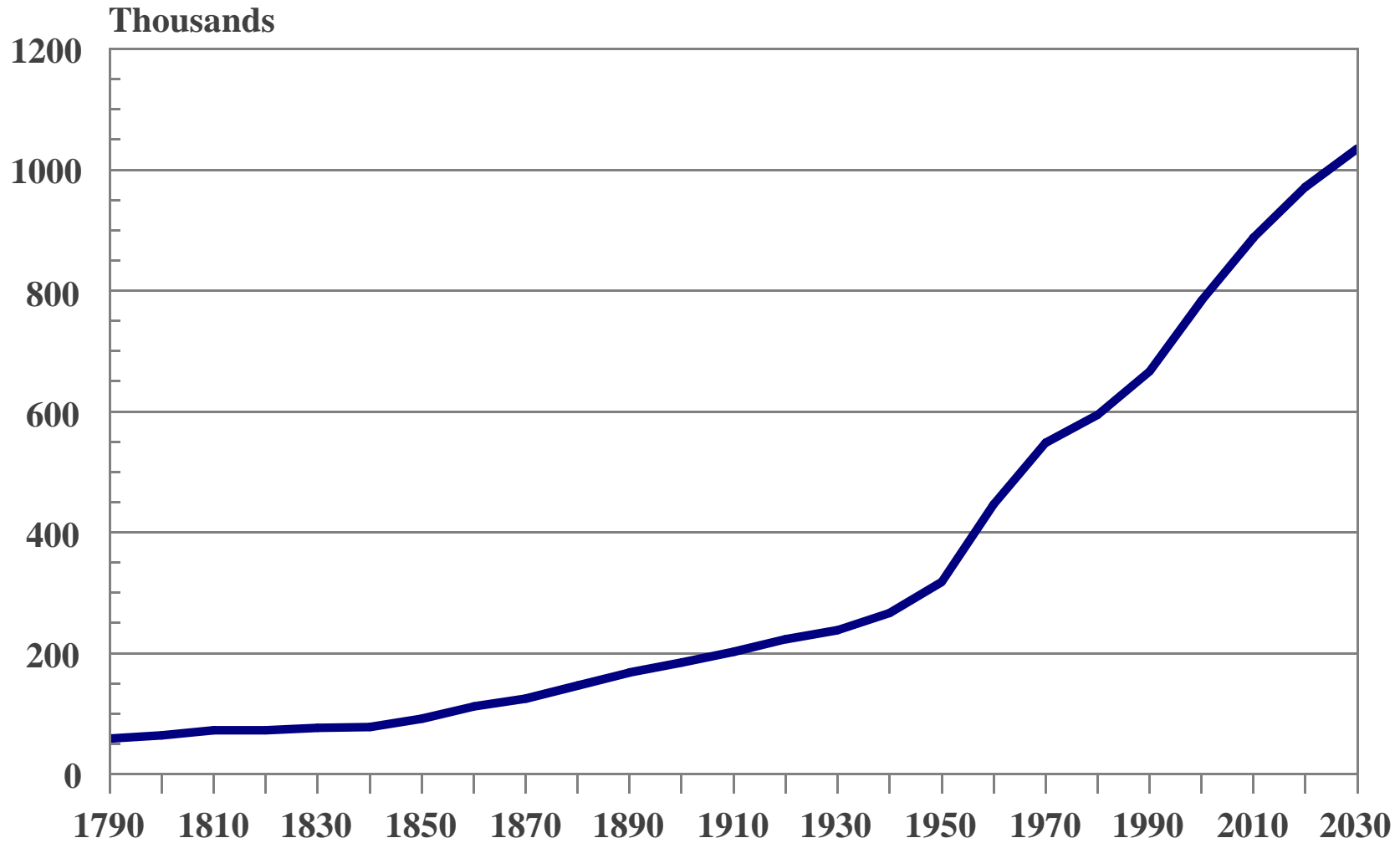
Delaware Institute for Local Government Leaders

by

Edward C. Ratledge  
Center for Applied Demography & Survey Research  
University of Delaware

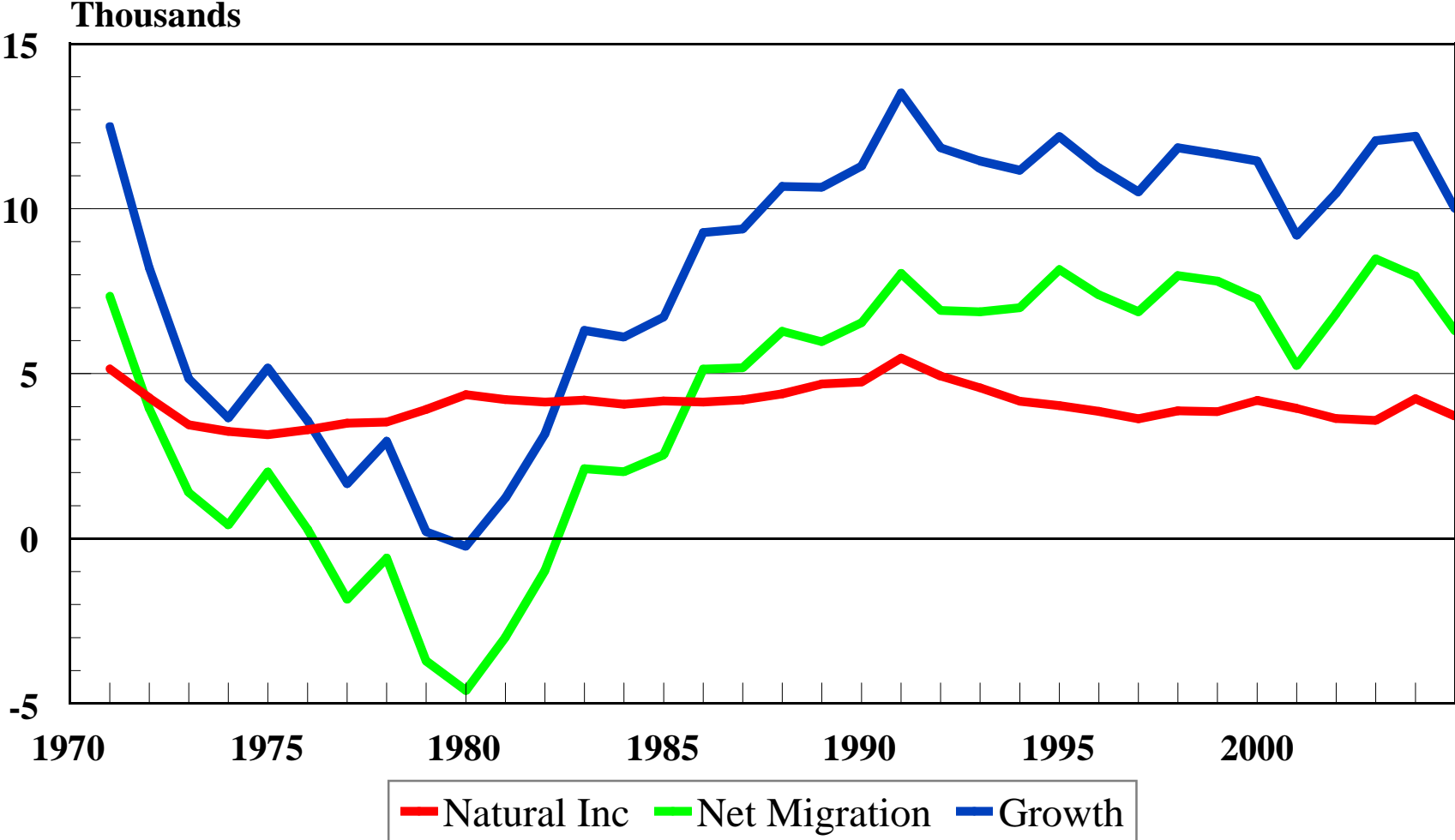
October 28, 2005

# Delaware Population 1790-2030



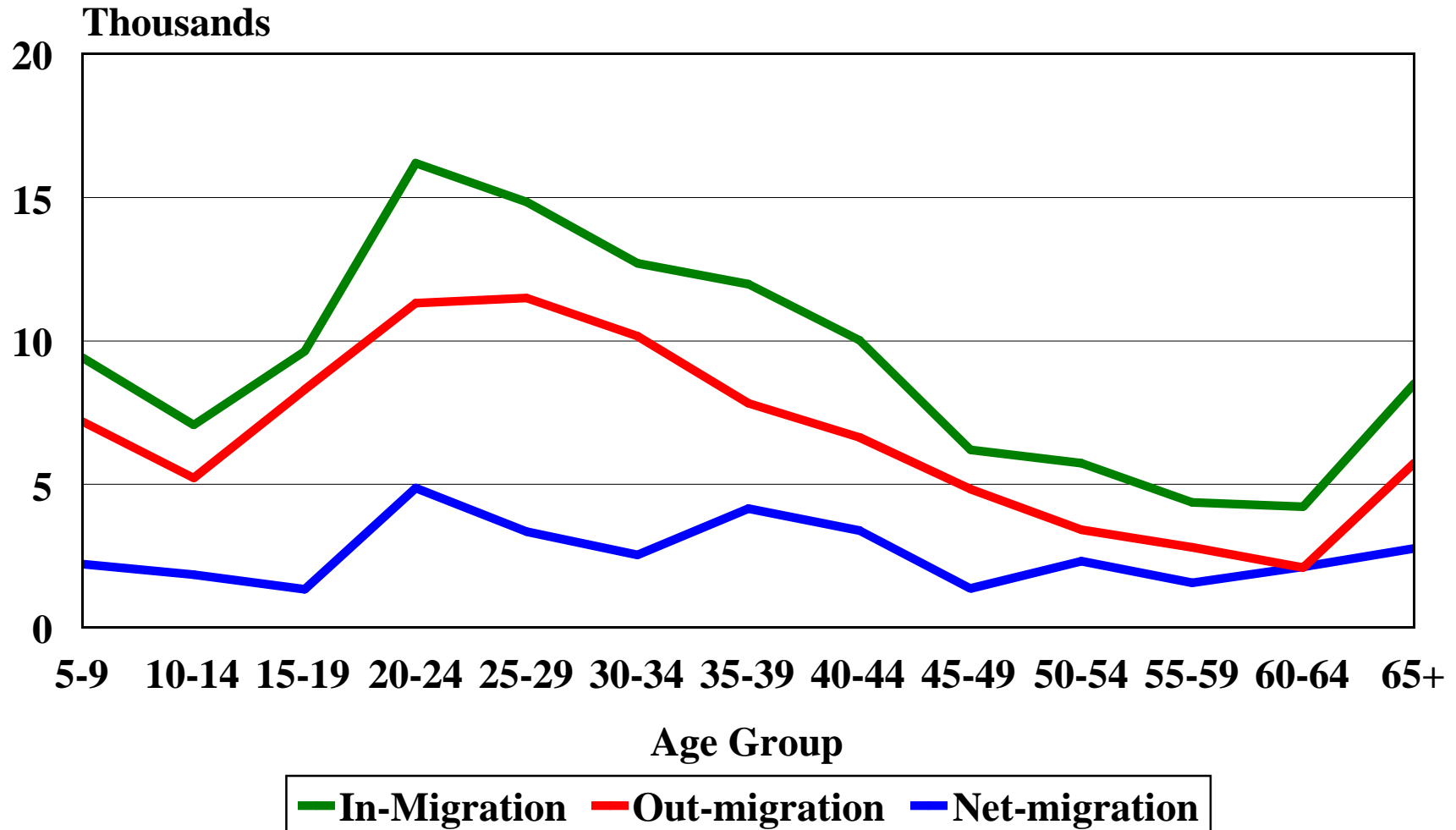
Source: Center for Applied Demography and Survey Research, University of Delaware

# State of Delaware Sources of Population Growth 1970-2005



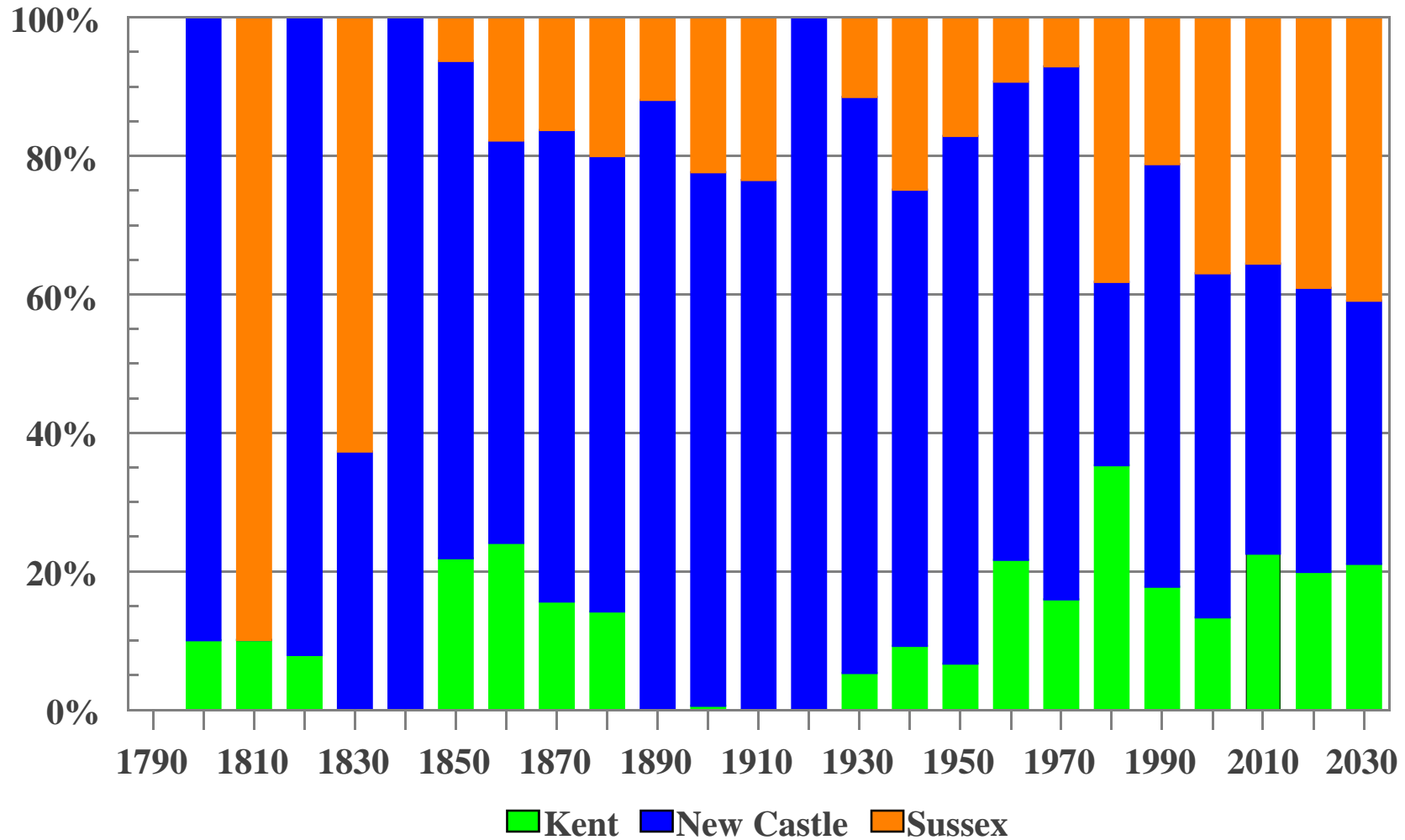
Source: Center for Applied Demography and Survey Research, University of Delaware

## Migration to and from Delaware by Age Group 1995-2000



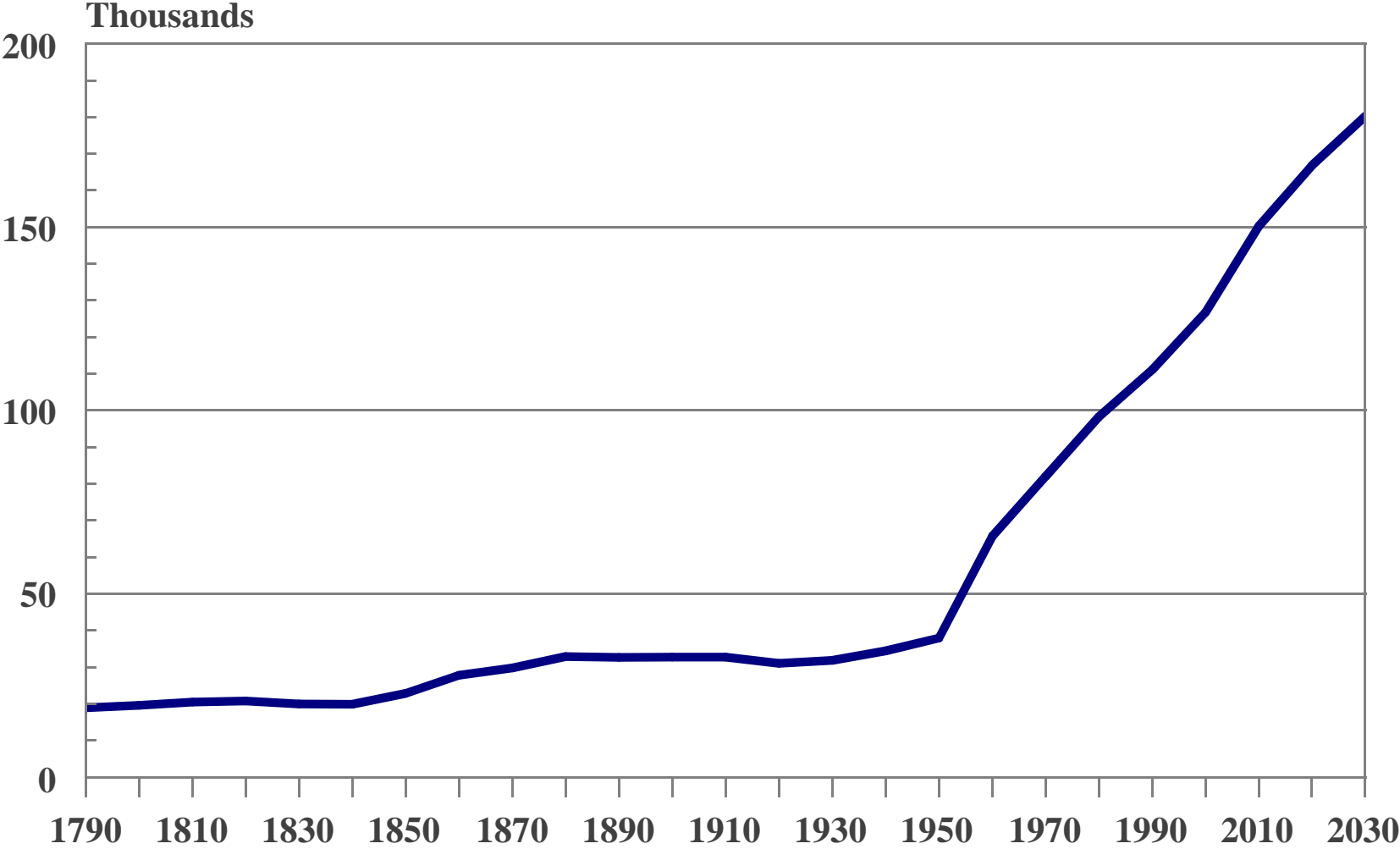
Source: Center for Applied Demography and Survey Research, University of Delaware

# County Share of Population Growth 1790-2030



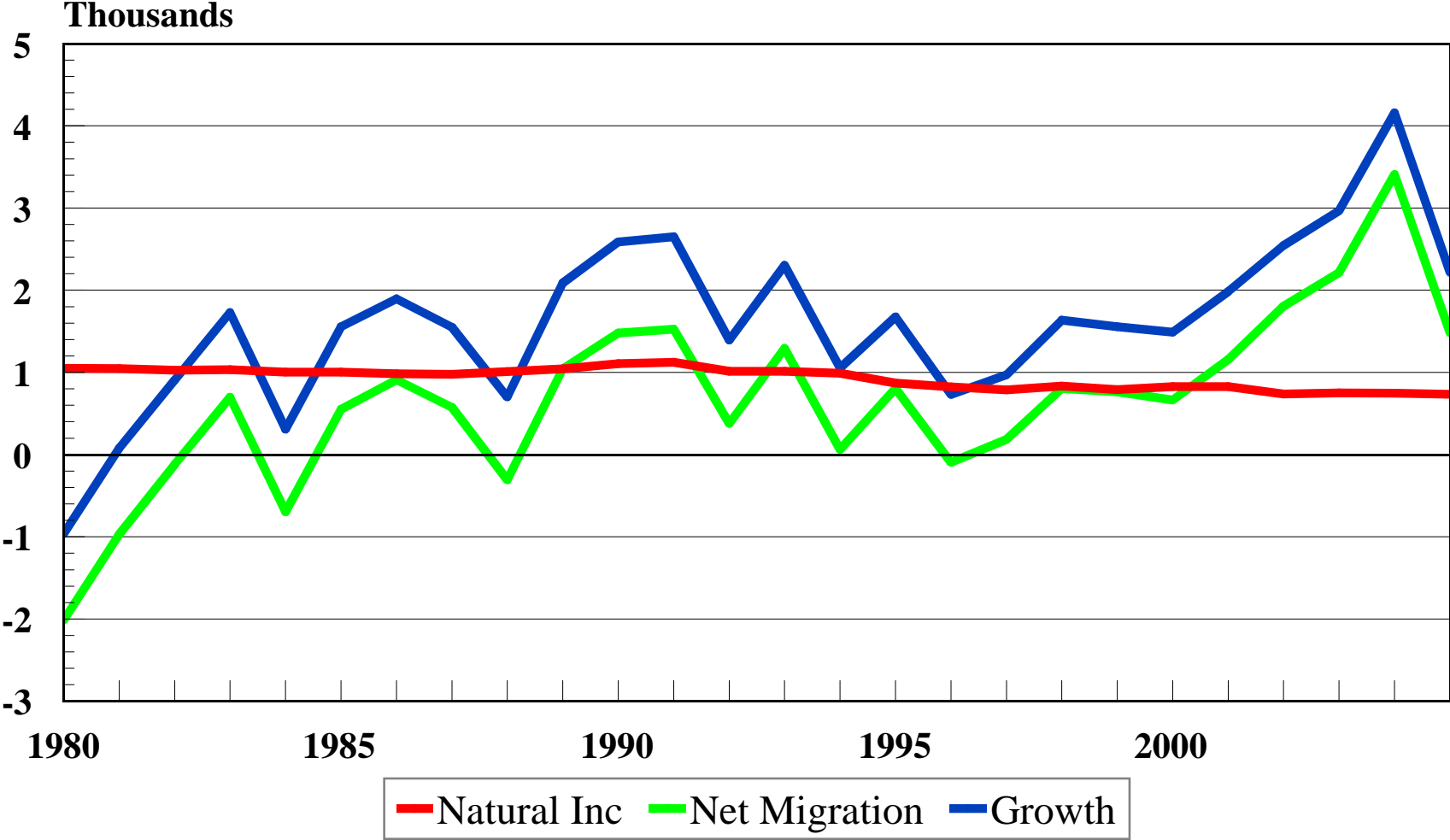
Source: Center for Applied Demography and Survey Research, University of Delaware

# Kent County Population 1790-2030



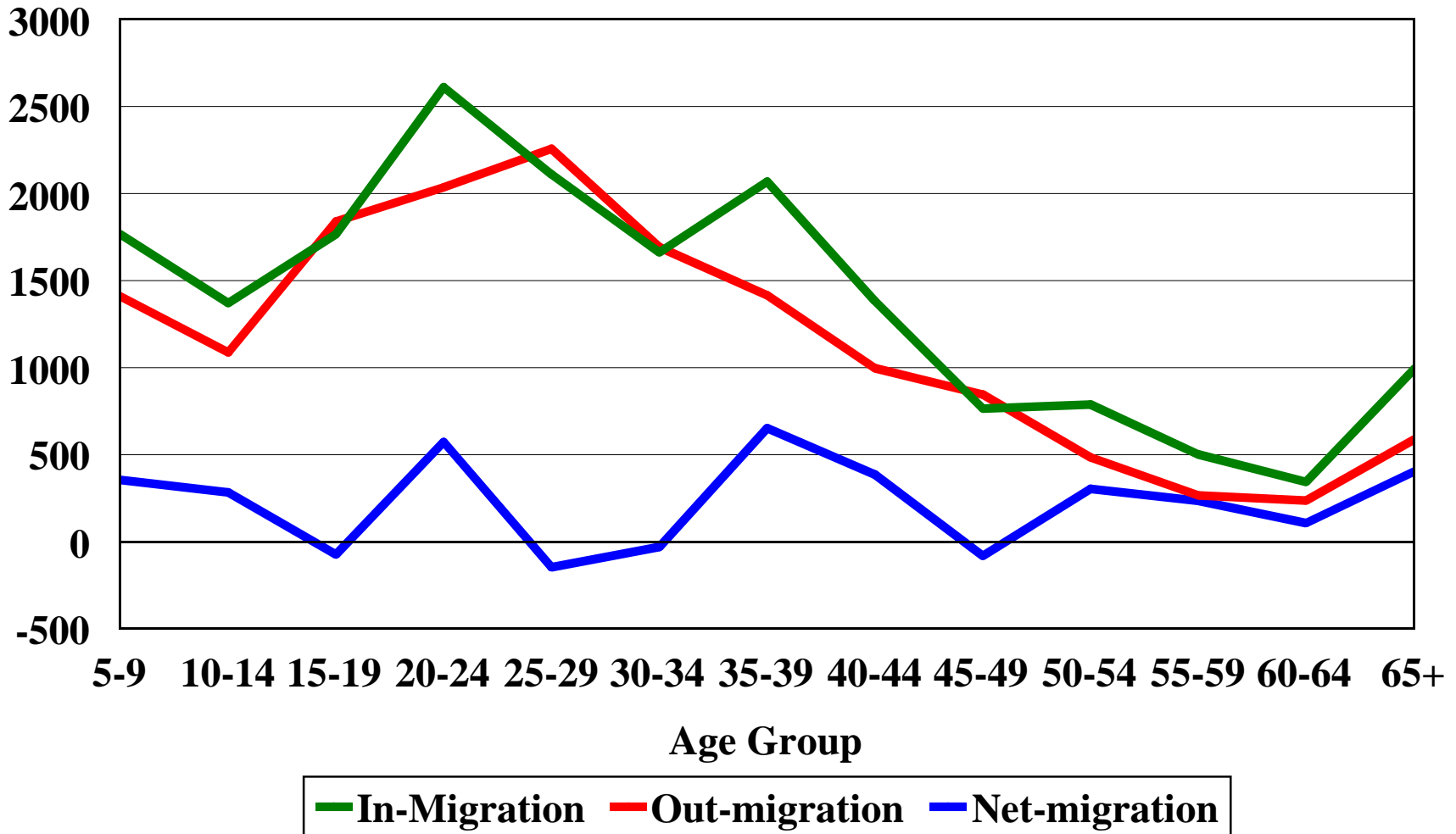
Source: Center for Applied Demography and Survey Research, University of Delaware

# Kent County County Sources of Population Growth 1980-2004



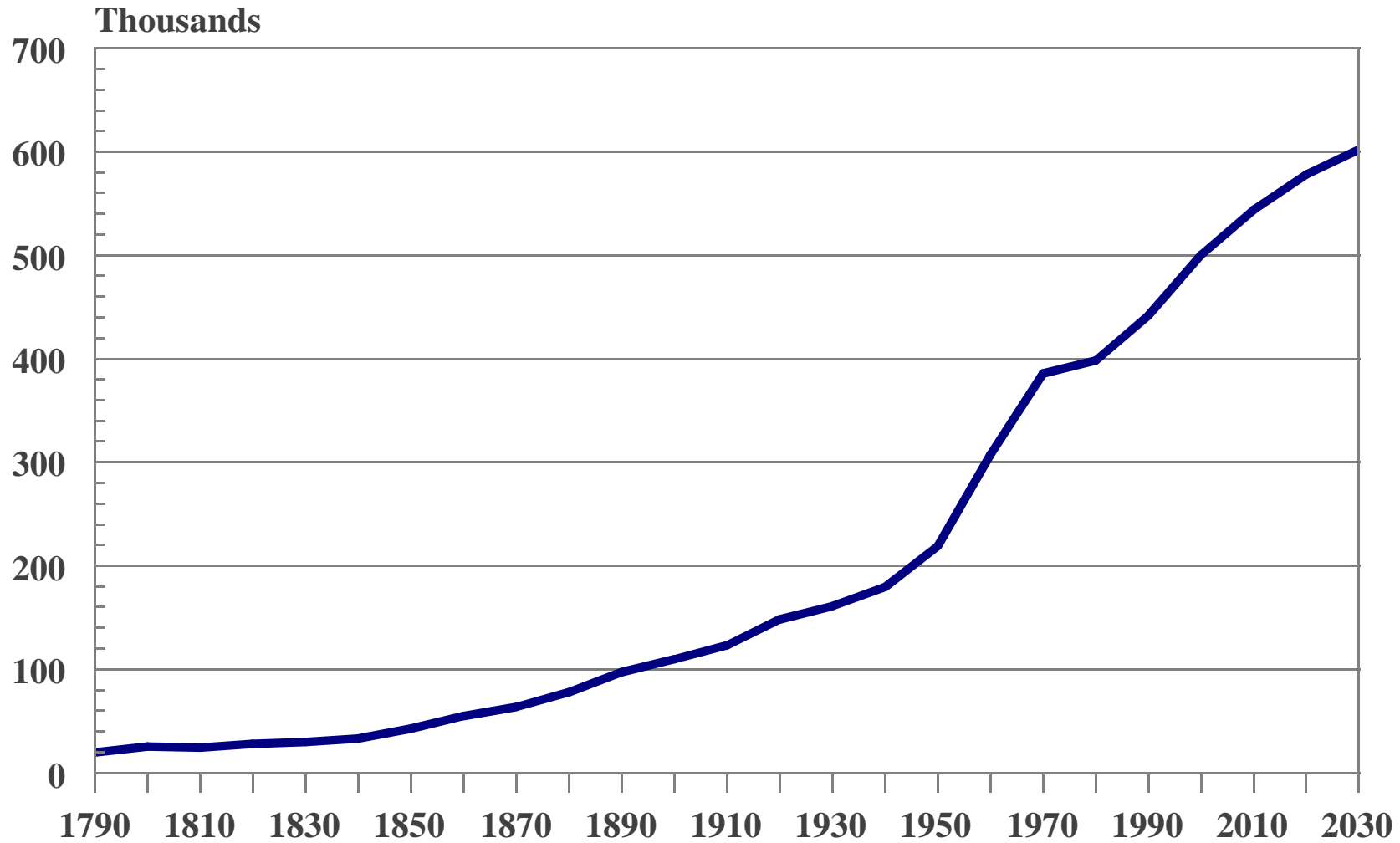
Source: Center for Applied Demography and Survey Research, University of Delaware

# Migration to and from Kent County by Age Group 1995-2000



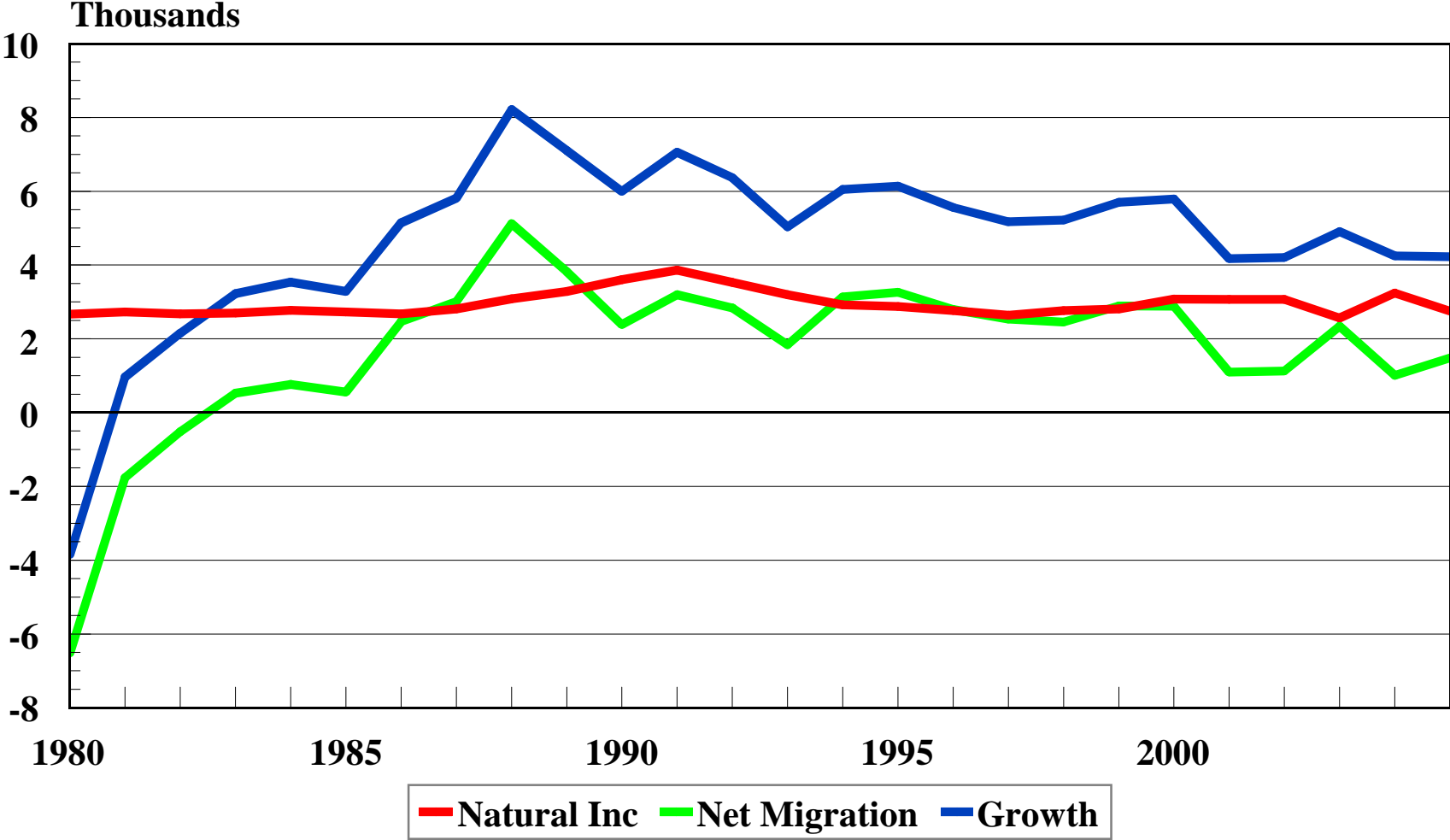
Source: Center for Applied Demography and Survey Research, University of Delaware

# New Castle County Population 1790-2030



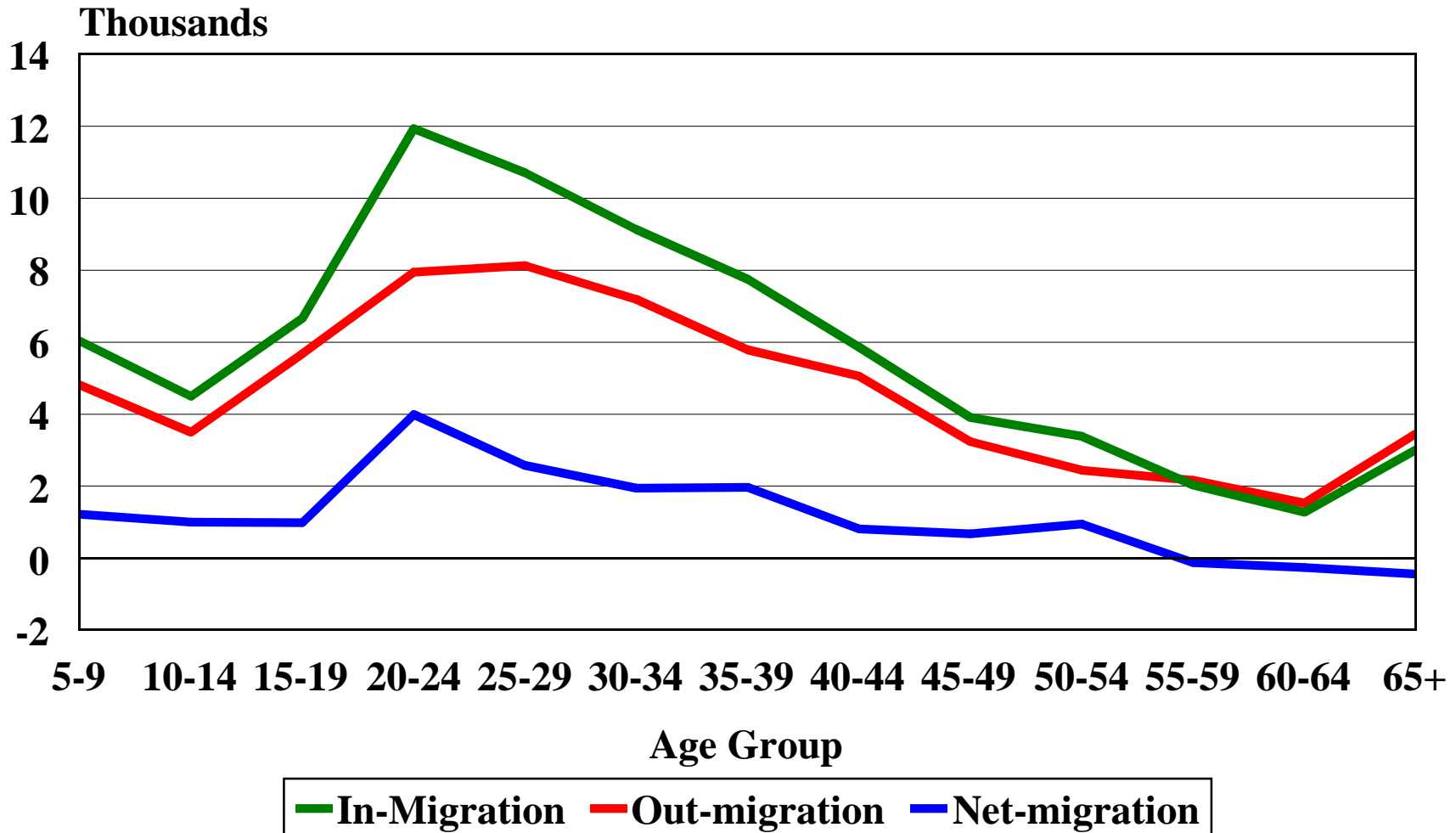
Source: Center for Applied Demography and Survey Research, University of Delaware

# New Castle County Sources of Population Growth 1980-2004



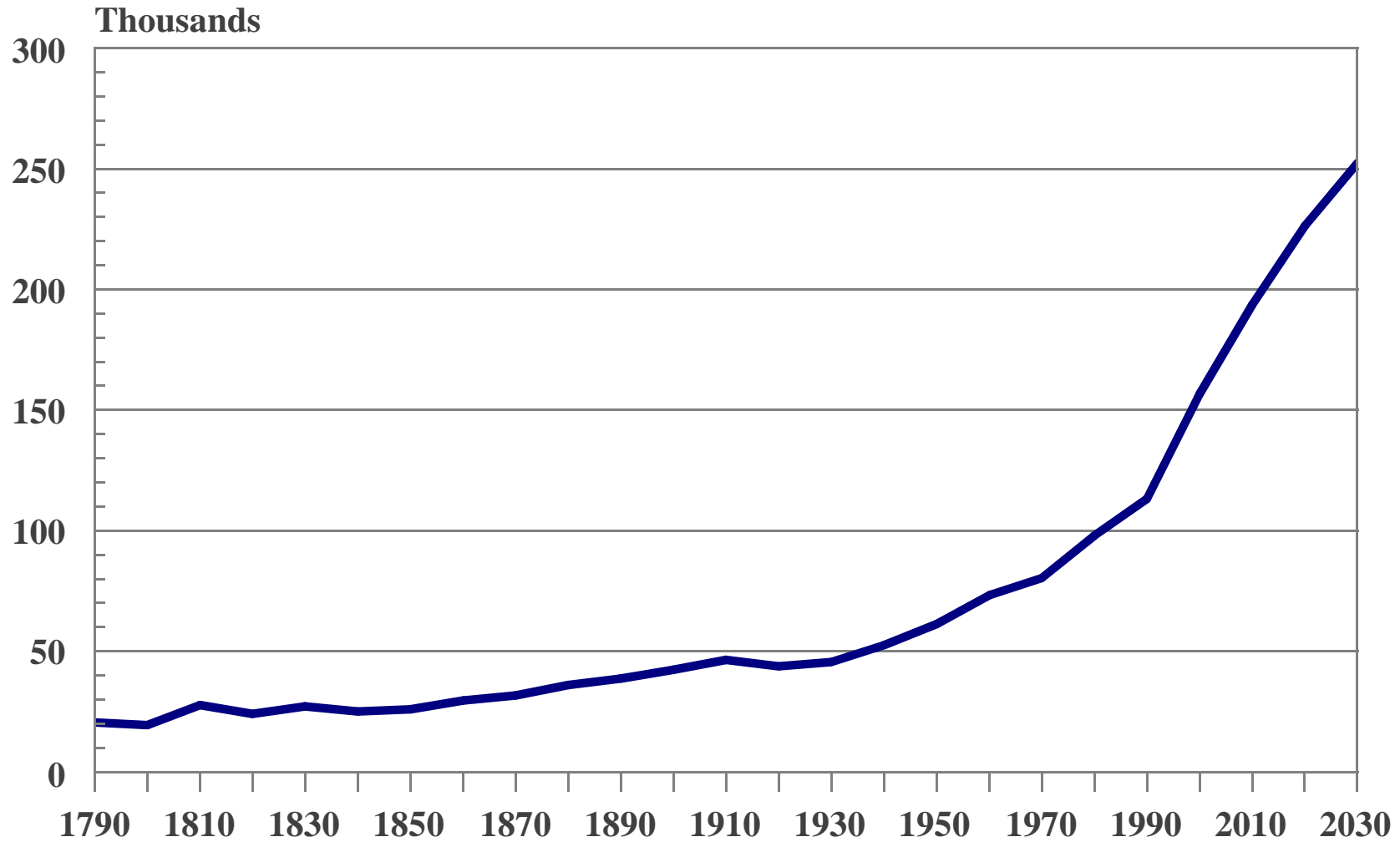
Source: Center for Applied Demography & Survey Research, University of Delaware

# Migration to and from New Castle County by Age Group 1995-2000



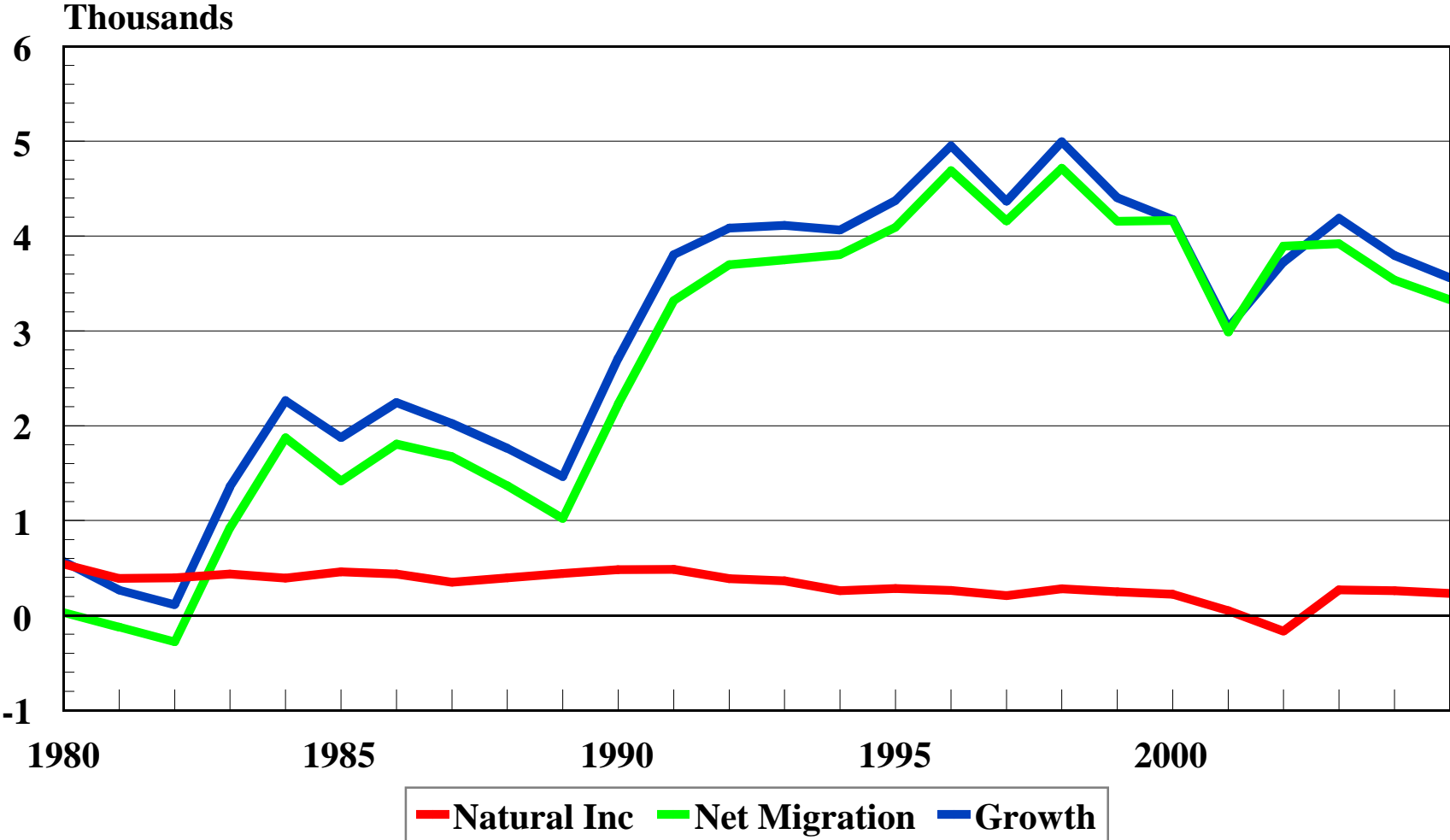
Source: Center for Applied Demography and Survey Research, University of Delaware

# Sussex County Population 1790-2030



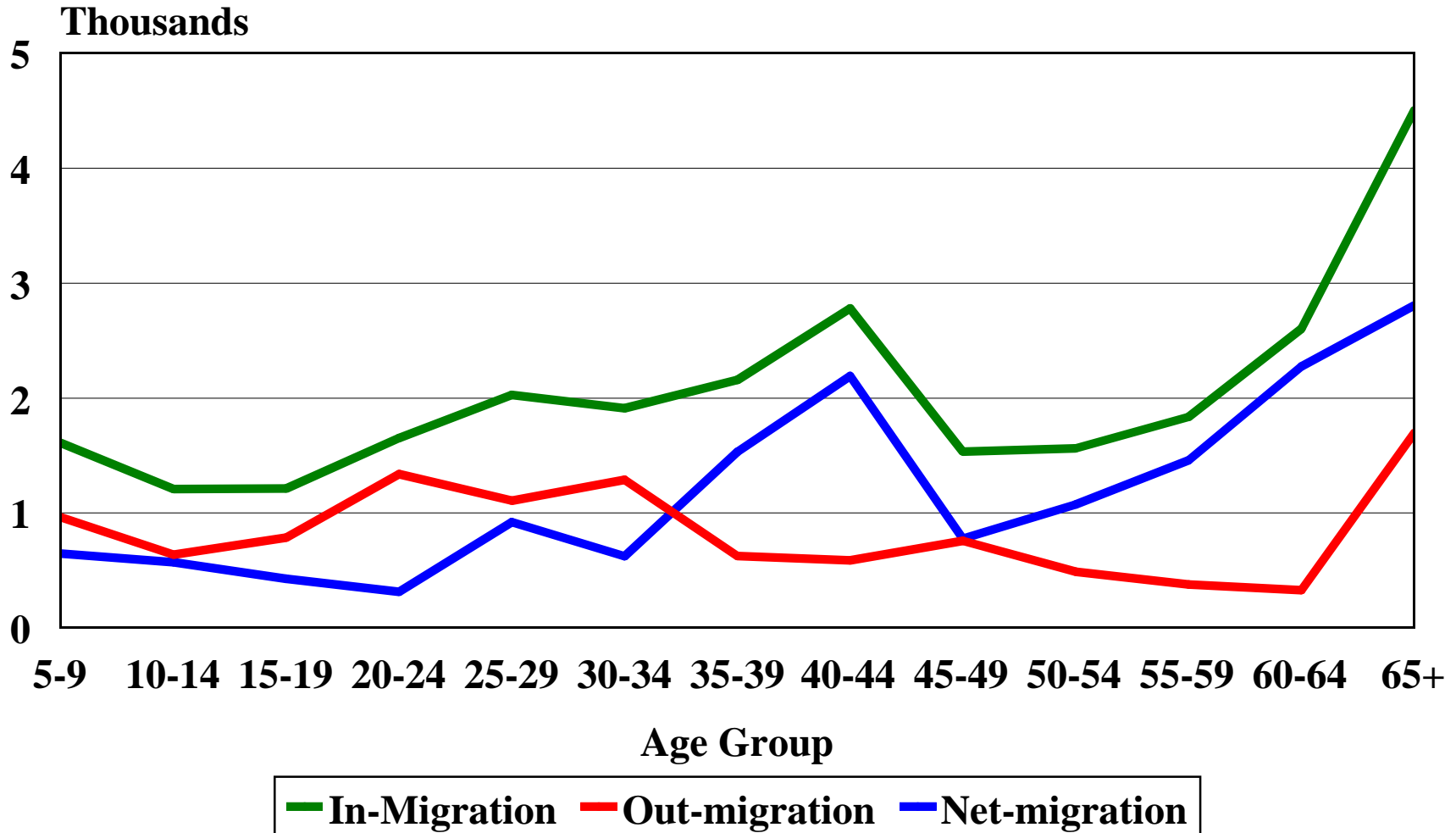
Source: Center for Applied Demography and Survey Research, University of Delaware

# Sussex County County Sources of Population Growth 1980-2004



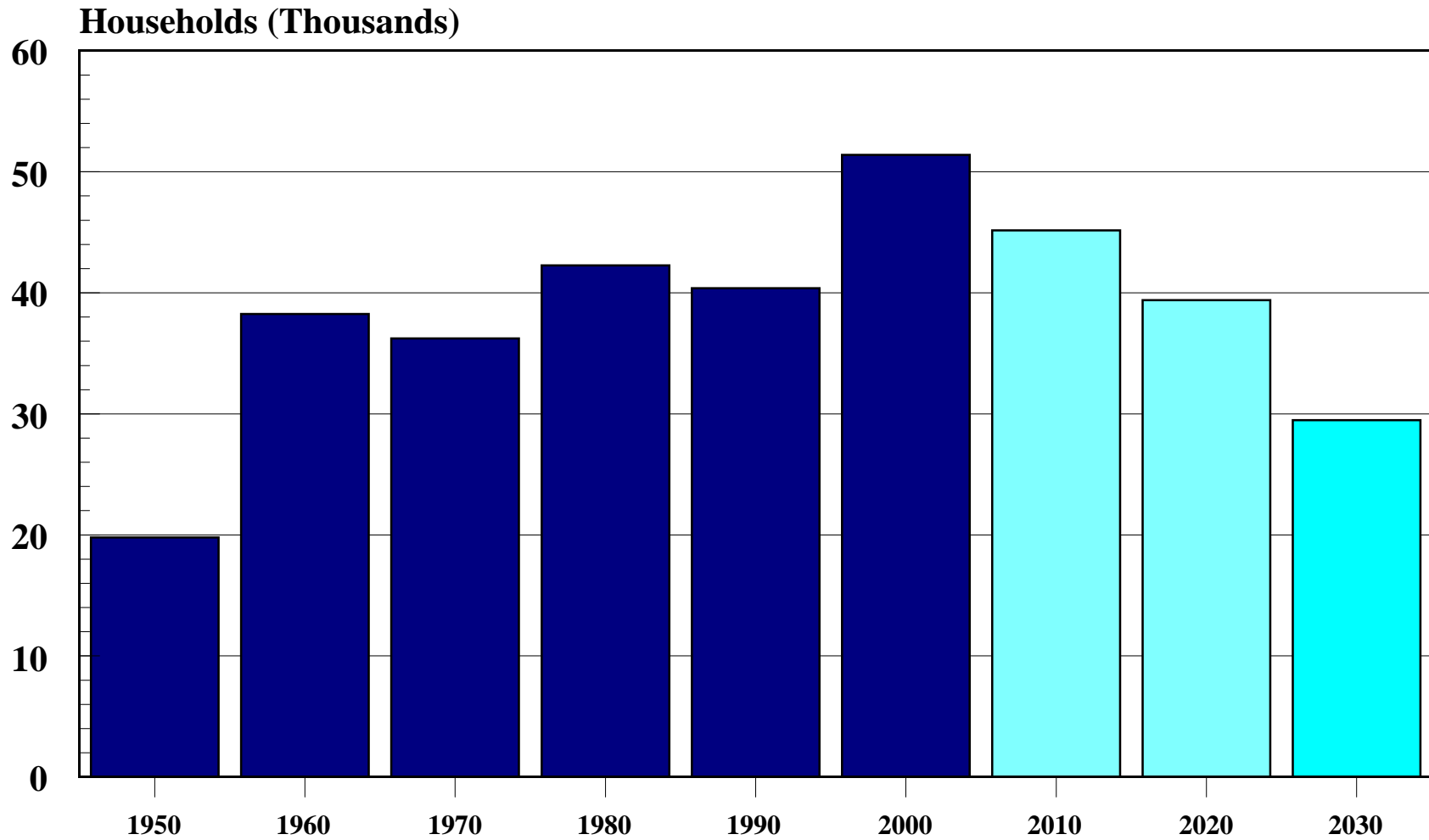
Source: Center for Applied Demography and Survey Research, University of Delaware

# Migration to and from Sussex County by Age Group 1995-2000



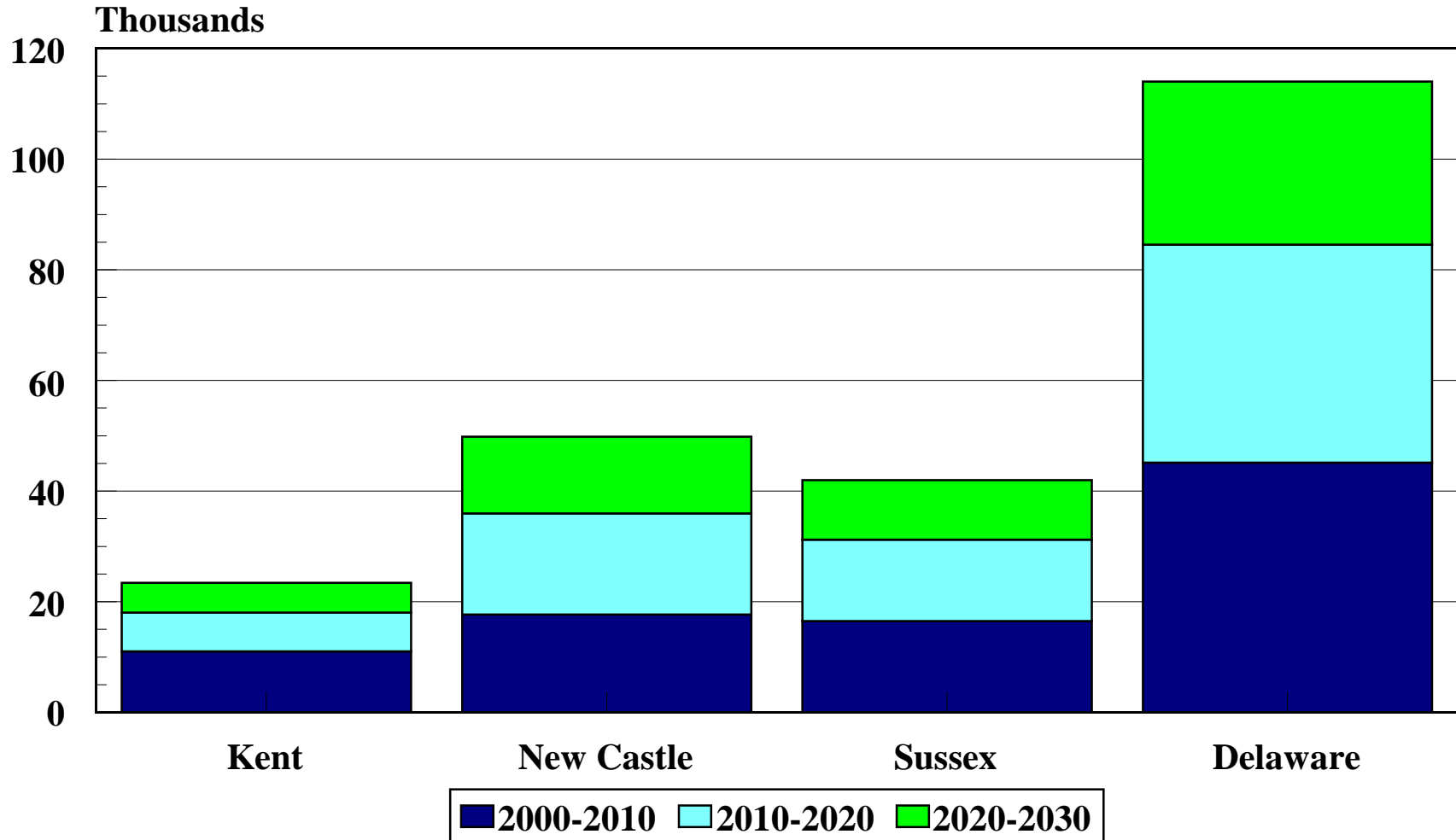
Source: Center for Applied Demography and Survey Research, University of Delaware

# Net New Households Delaware 1950-2030



Source: Center for Applied Demography and Survey Research, University of Delaware

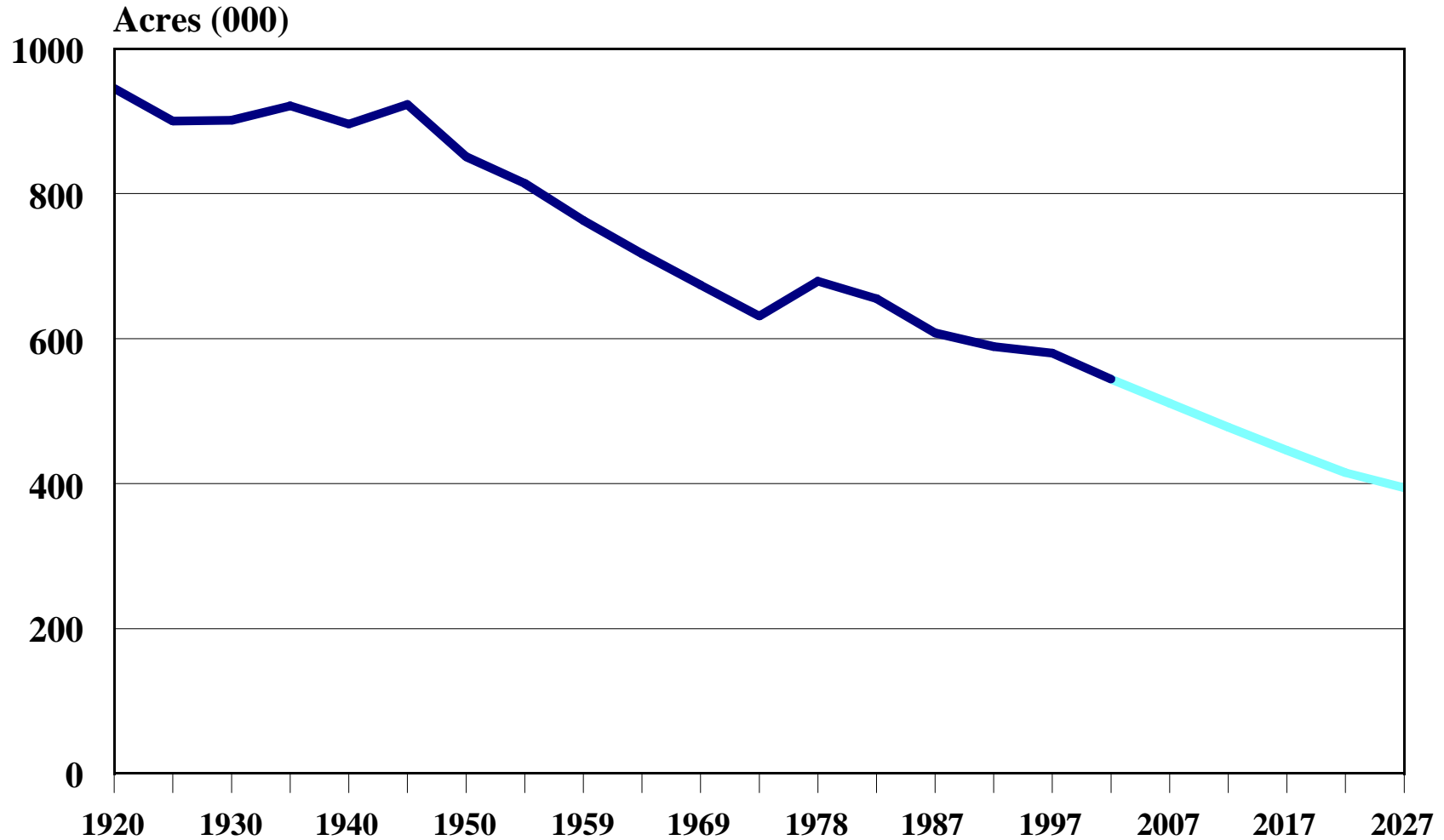
# New Households 2000-2030 by County

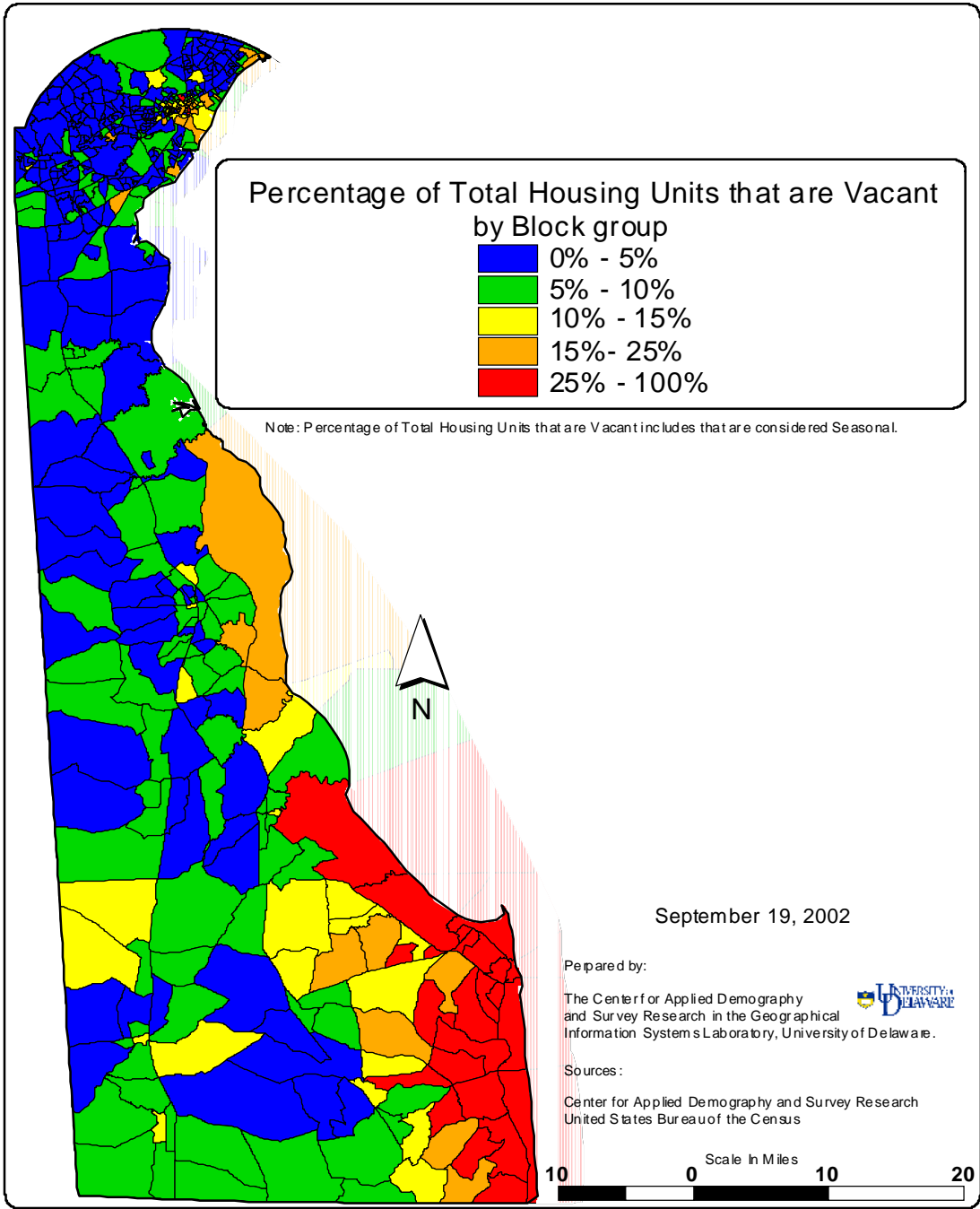


Source: Center for Applied Demography and Survey Research, University of Delaware

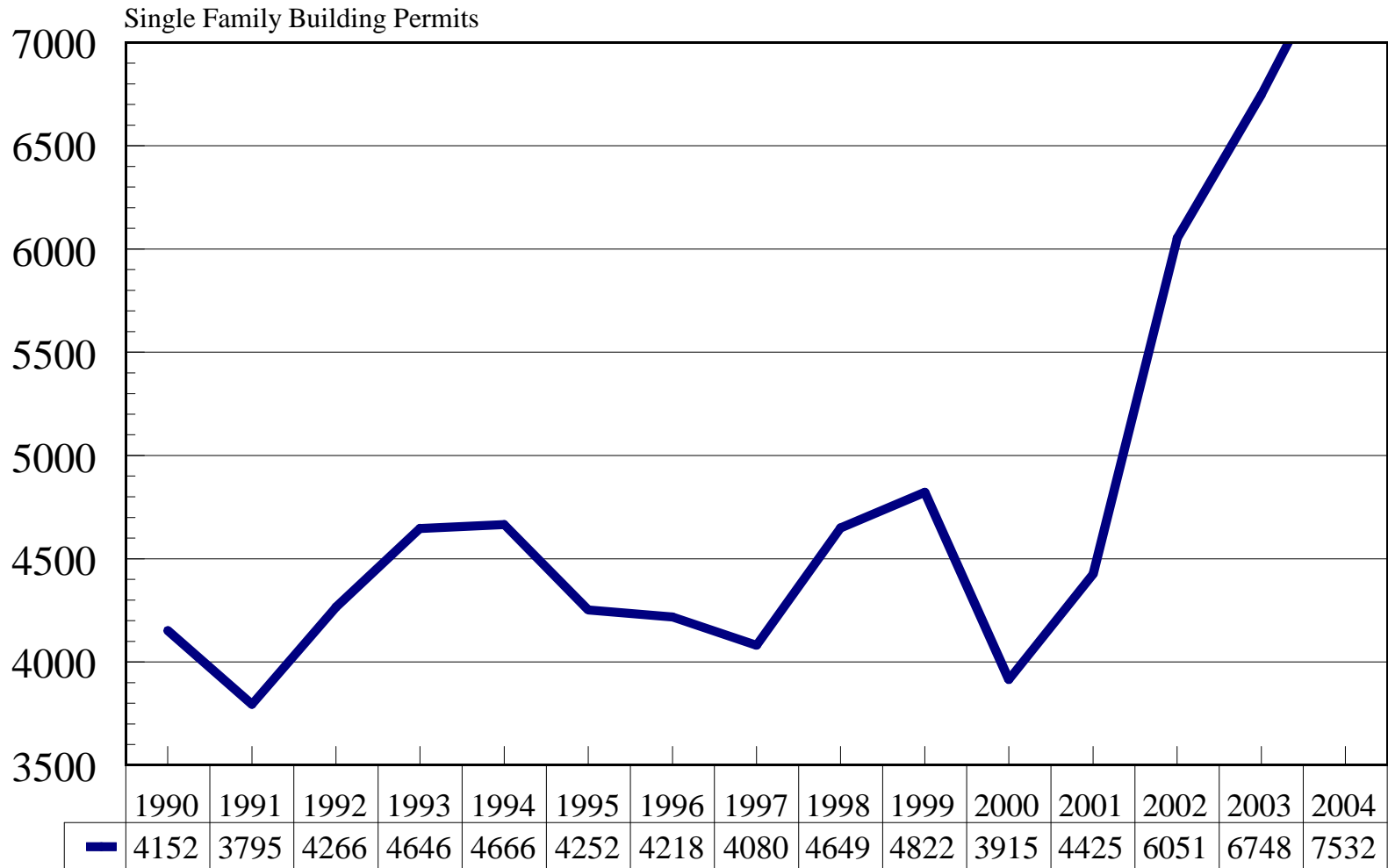
# Acres of Farmland

Delaware 1920-2027



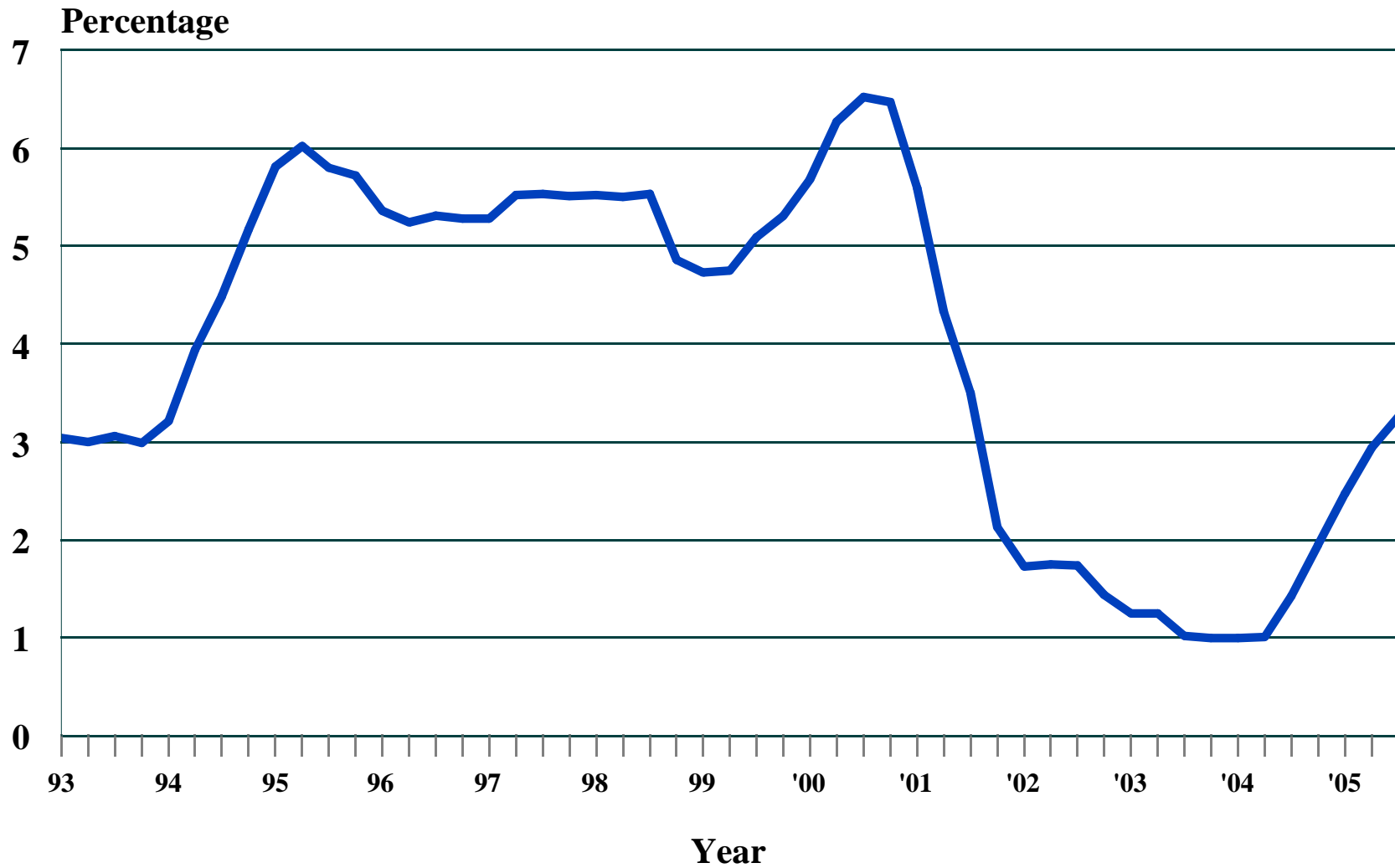


# Delaware Housing Market Still Going Strong



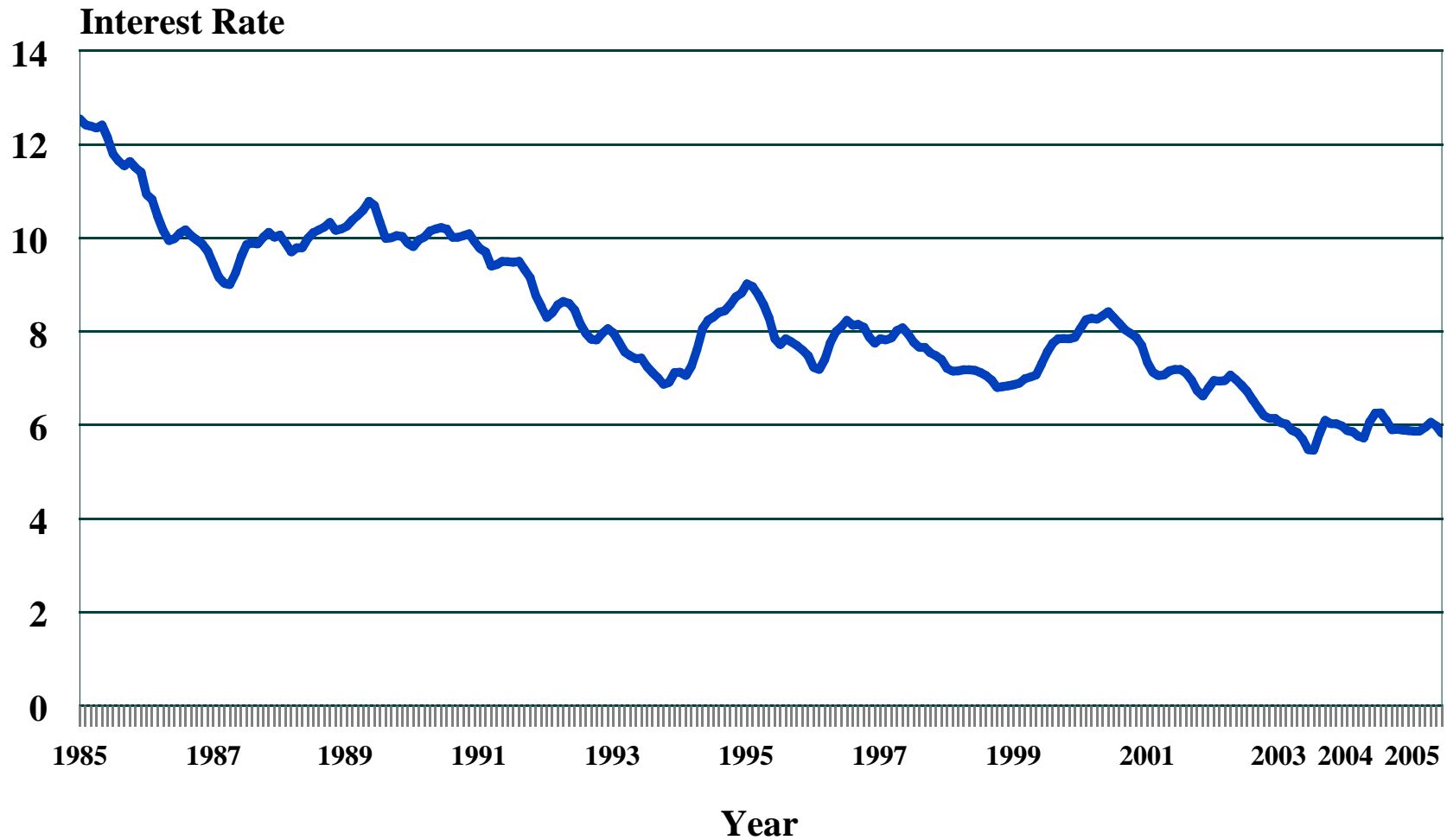
Source: Center for Applied Demography and Survey Research, University of Delaware, Census.

# Federal Funds Rate 1993-2005



Source: Center for Applied Demography and Survey Research, University of Delaware

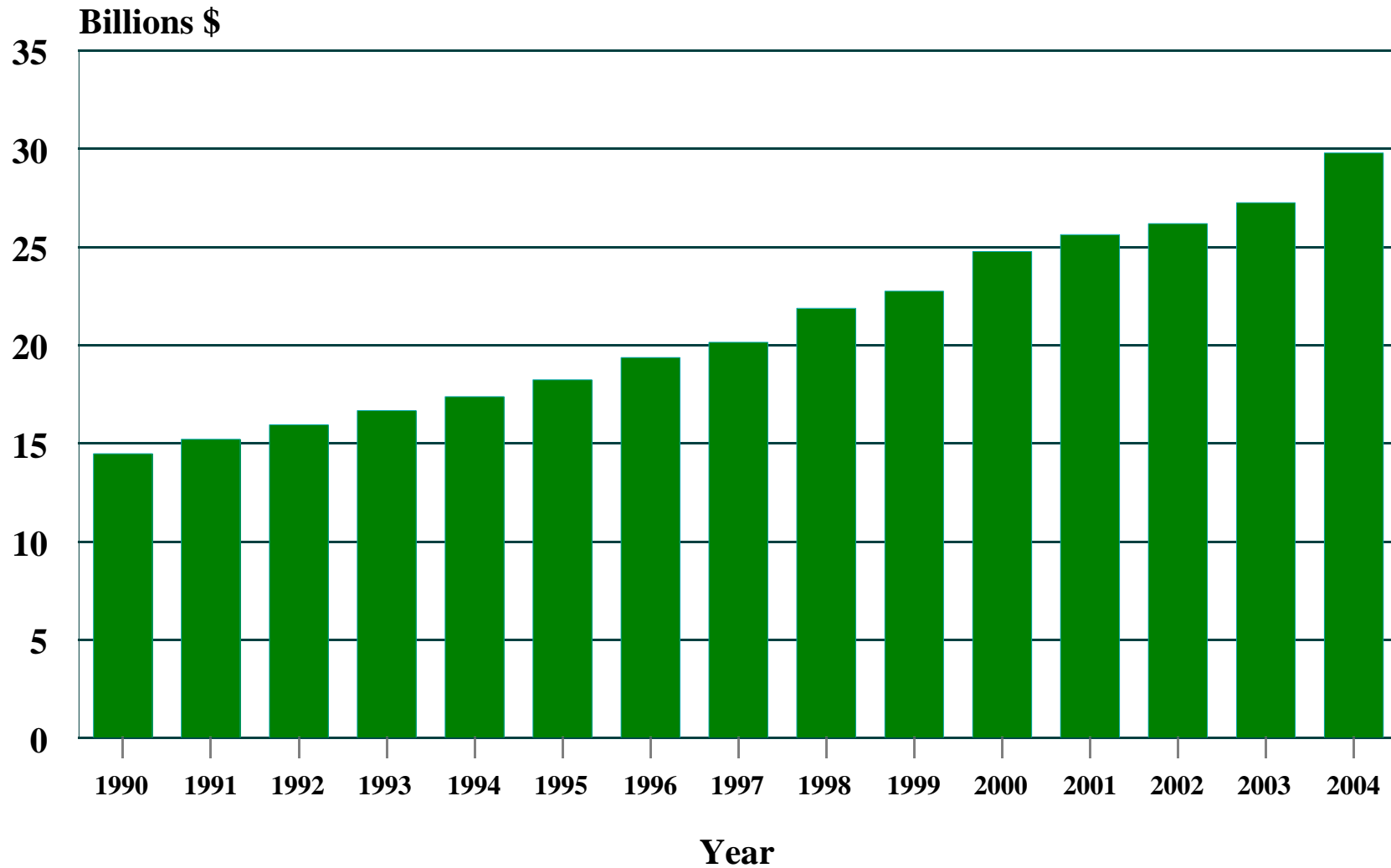
# U.S. Mortgage Rates 1985-2005



— Conventional Mortgages-Fixed Contract Rate

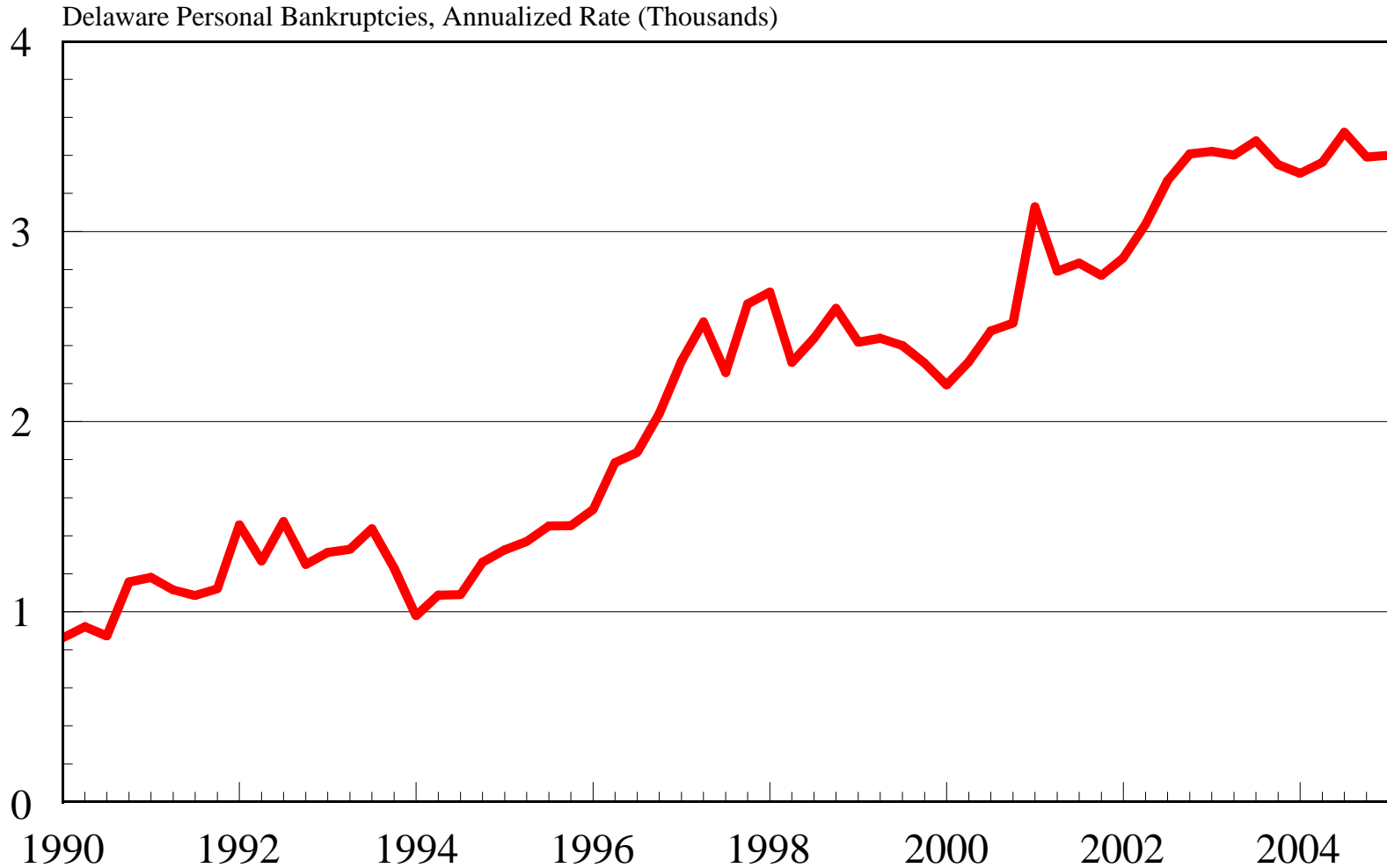
Source: Center for Applied Demography and Survey Research, University of Delaware, Federal Housing Finance Board:  
Rates & Terms on Conventional Single-Family Mortgages.

# Delaware Personal Income 1990-2004



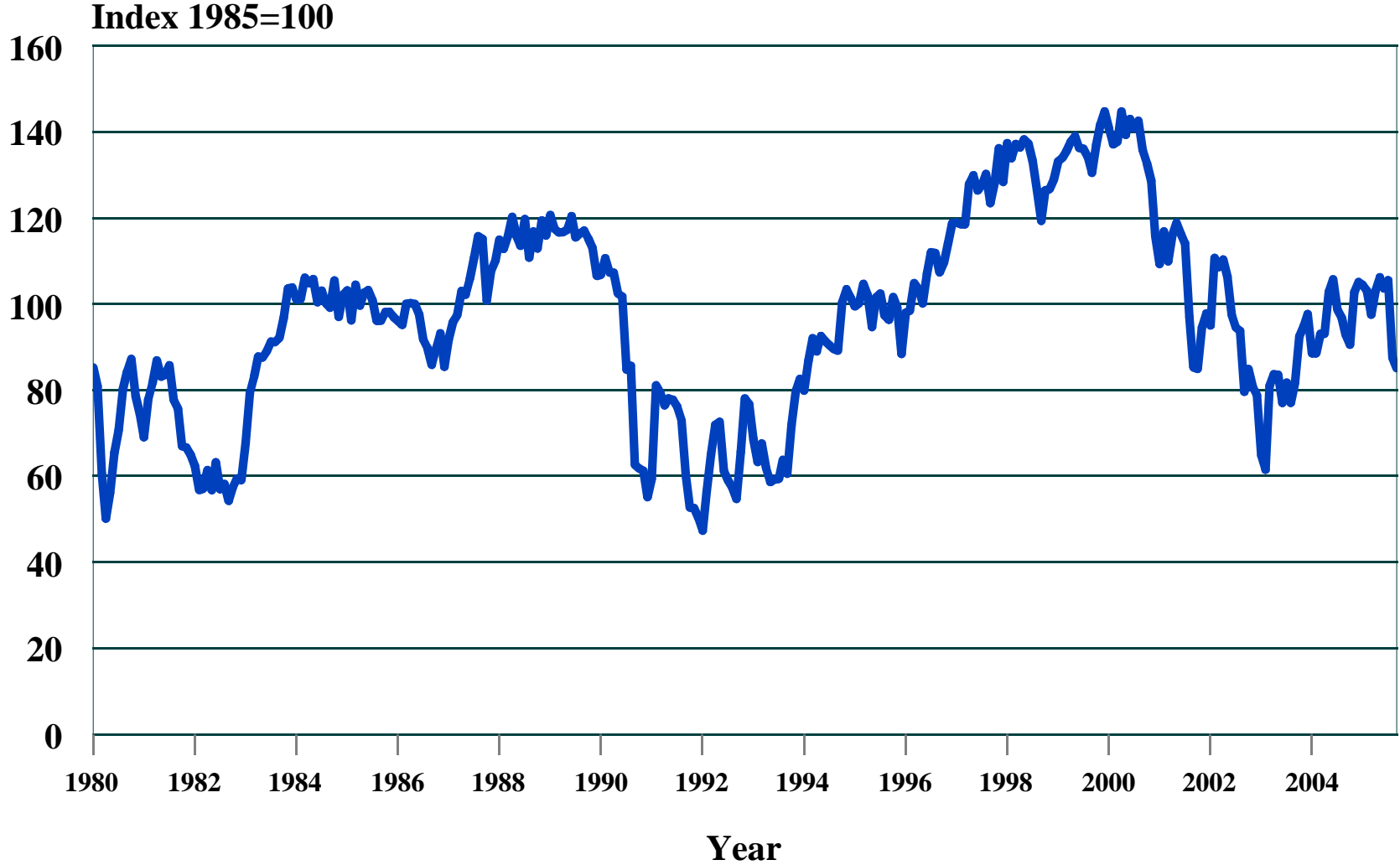
Source: Center for Applied Demography and Survey Research, University of Delaware, BEA.

# Delaware Personal Bankruptcies



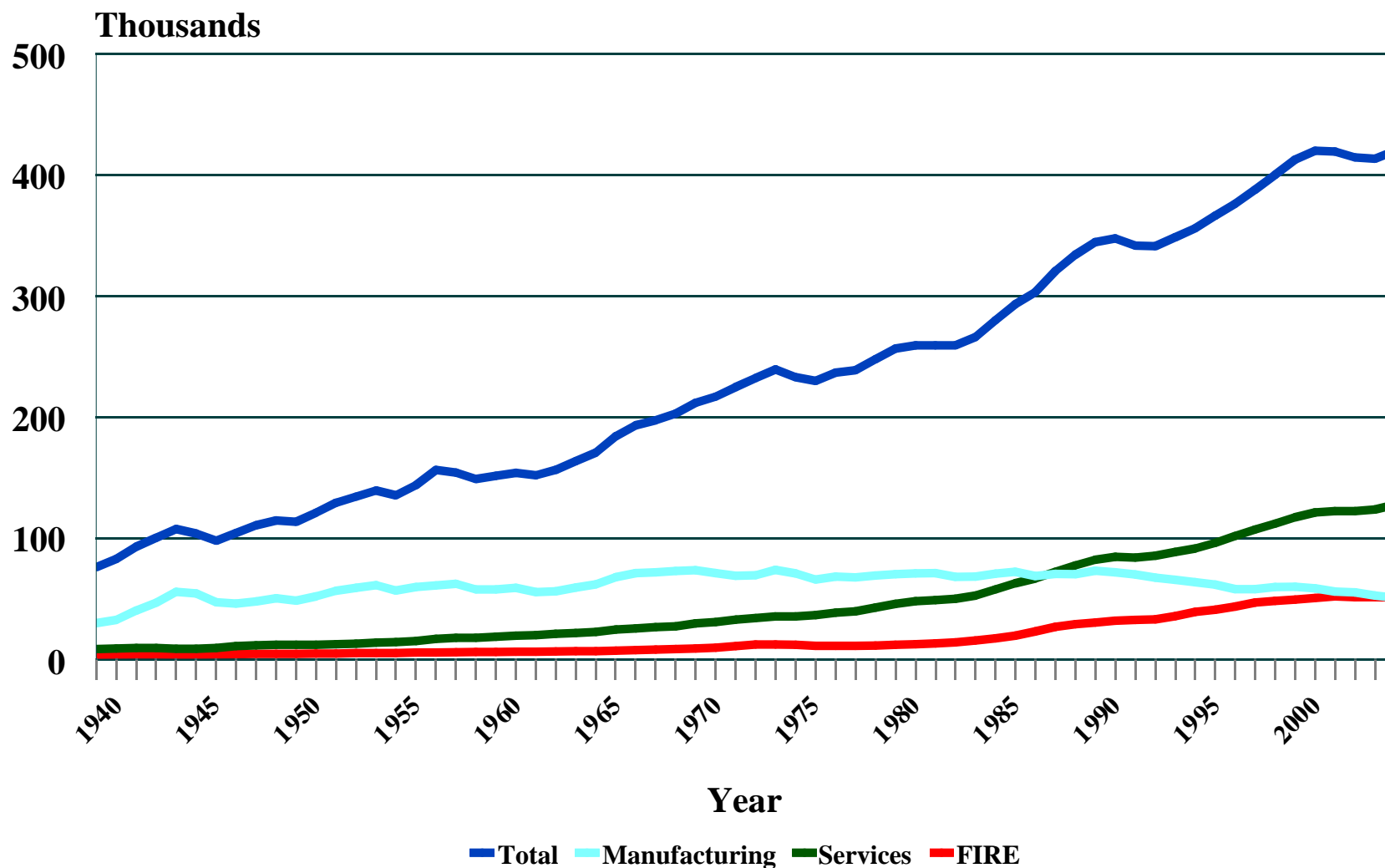
Source: Center for Applied Demography and Survey Research, University of Delaware, Administrative Offices of U.S. District Courts.

# Consumer Confidence 1980-2005



Source: Center for Applied Demography and Survey Research, University of Delaware. Monthly average.

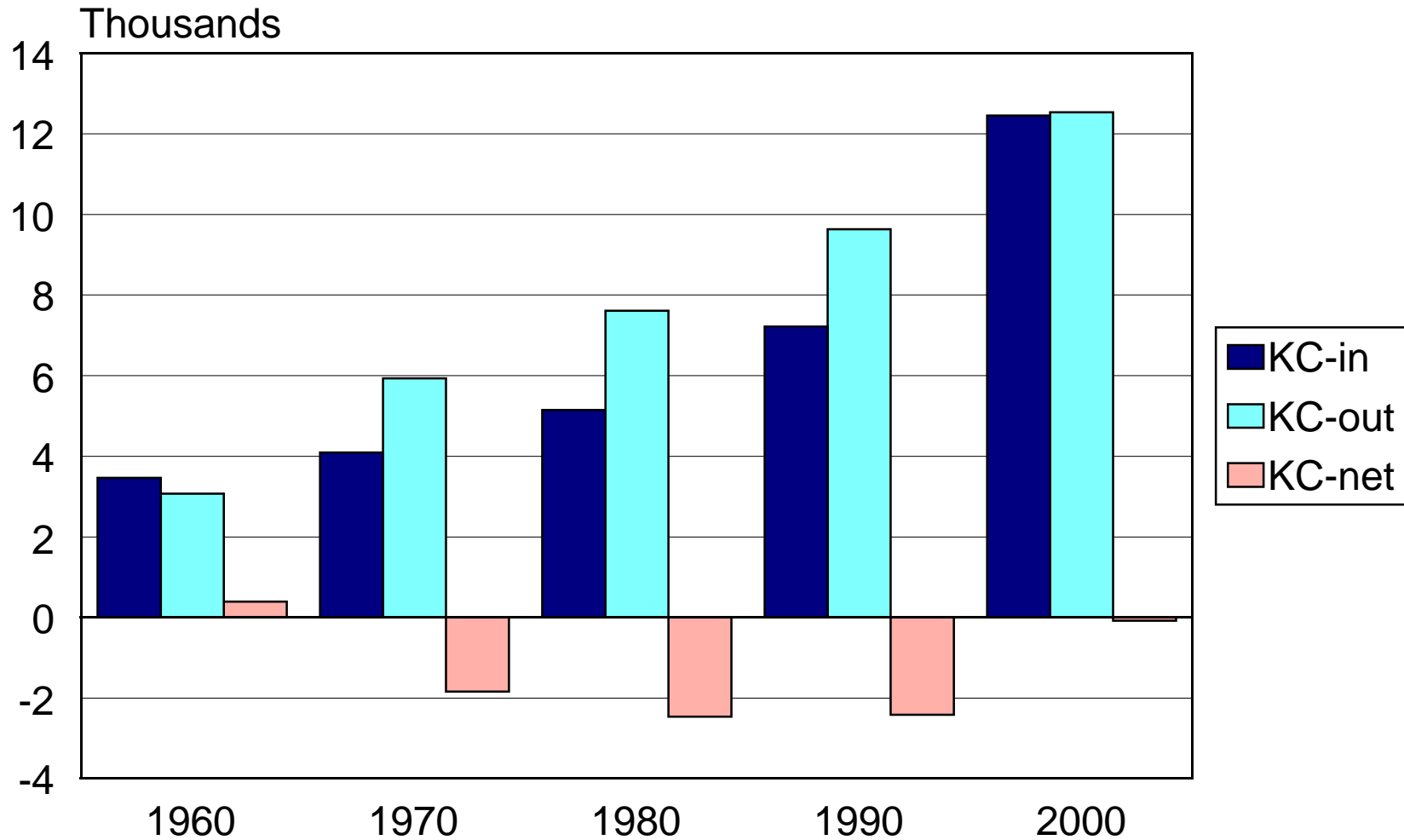
# Delaware Non-Agricultural Employment 1939-2005



Source: Center for Applied Demography and Survey Research, University of Delaware

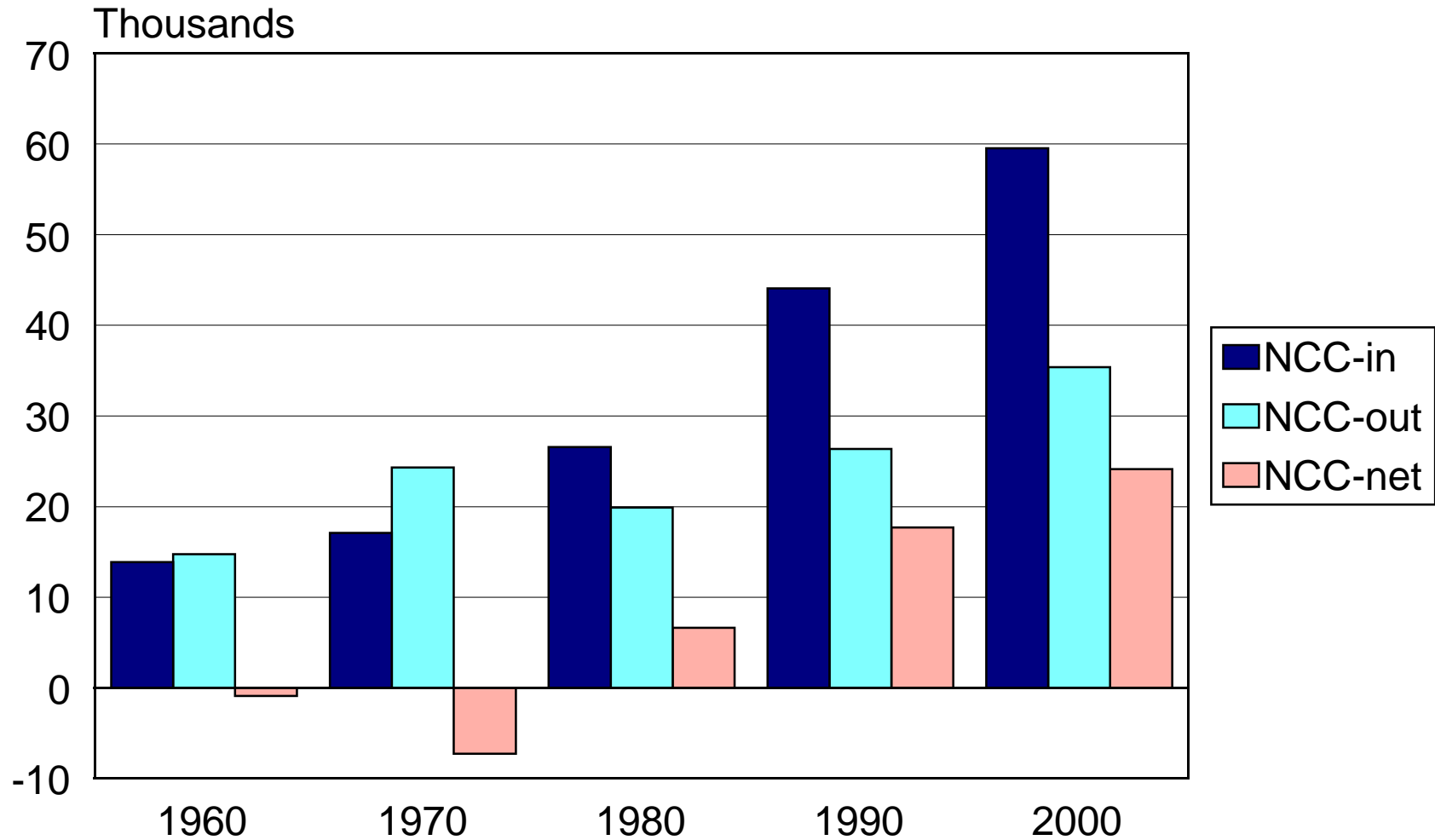
# Kent County Commuting

1960-2000



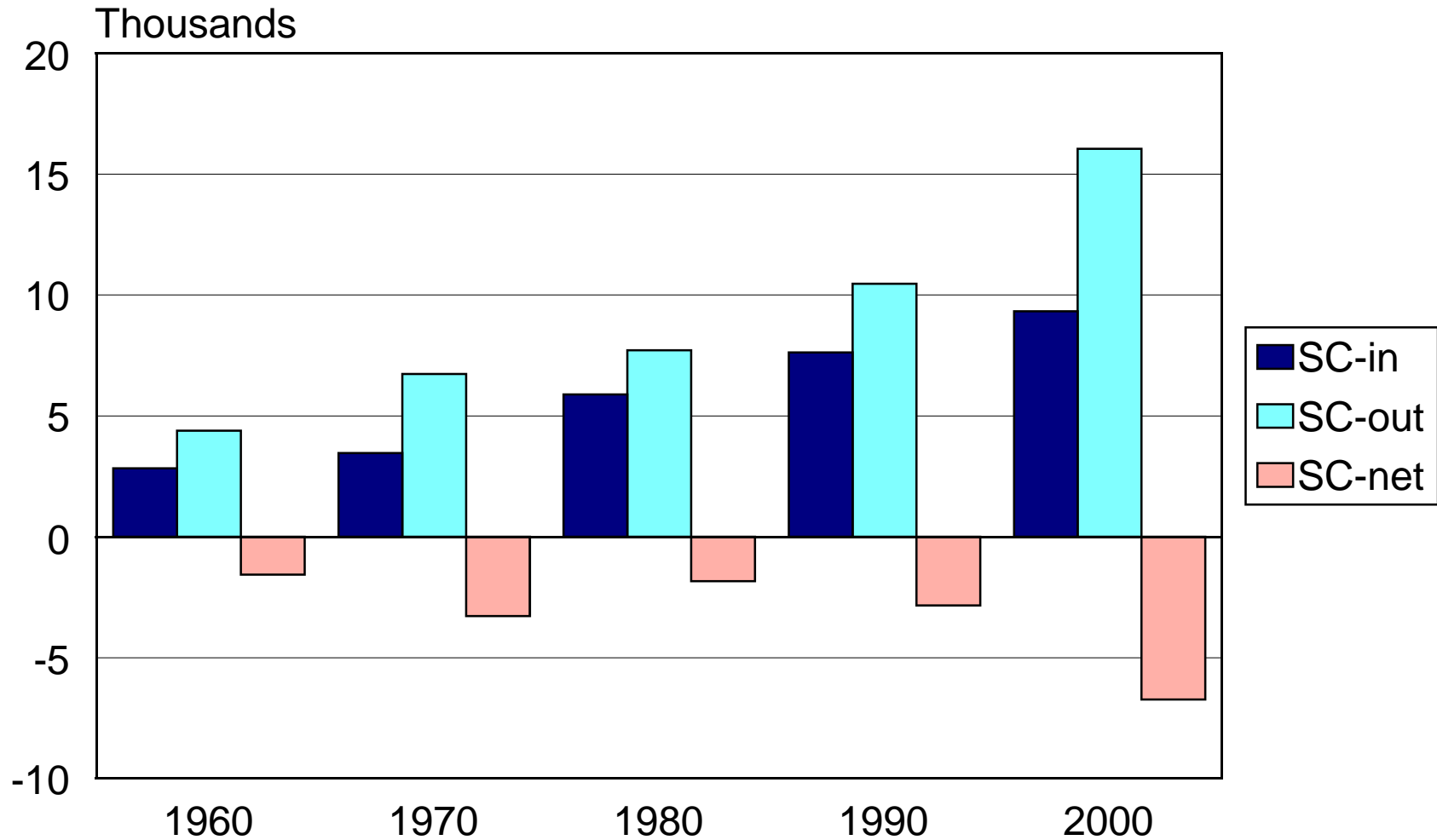
# New Castle County Commuting

1960-2000

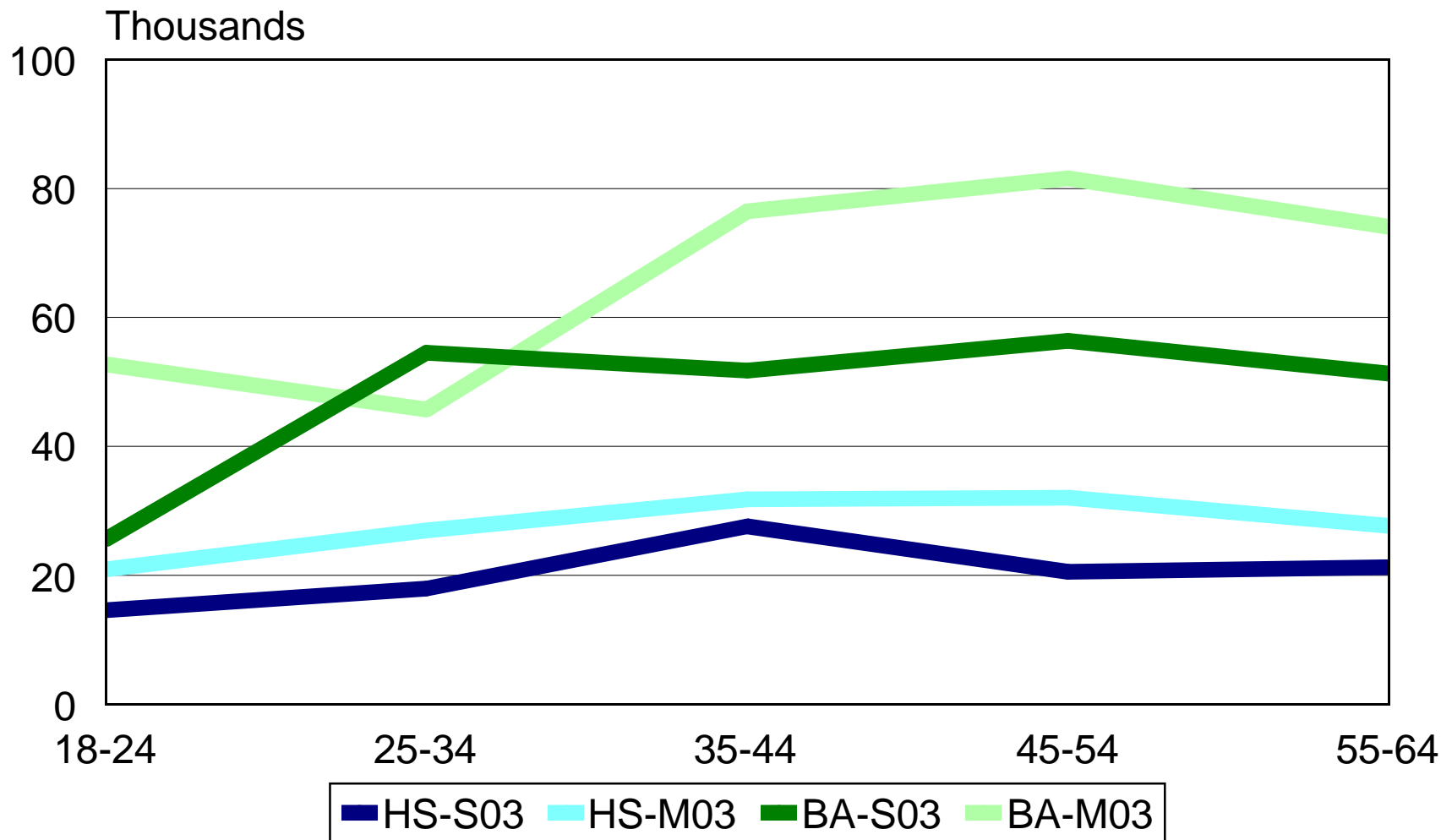


# Sussex County Commuting

1960-2000

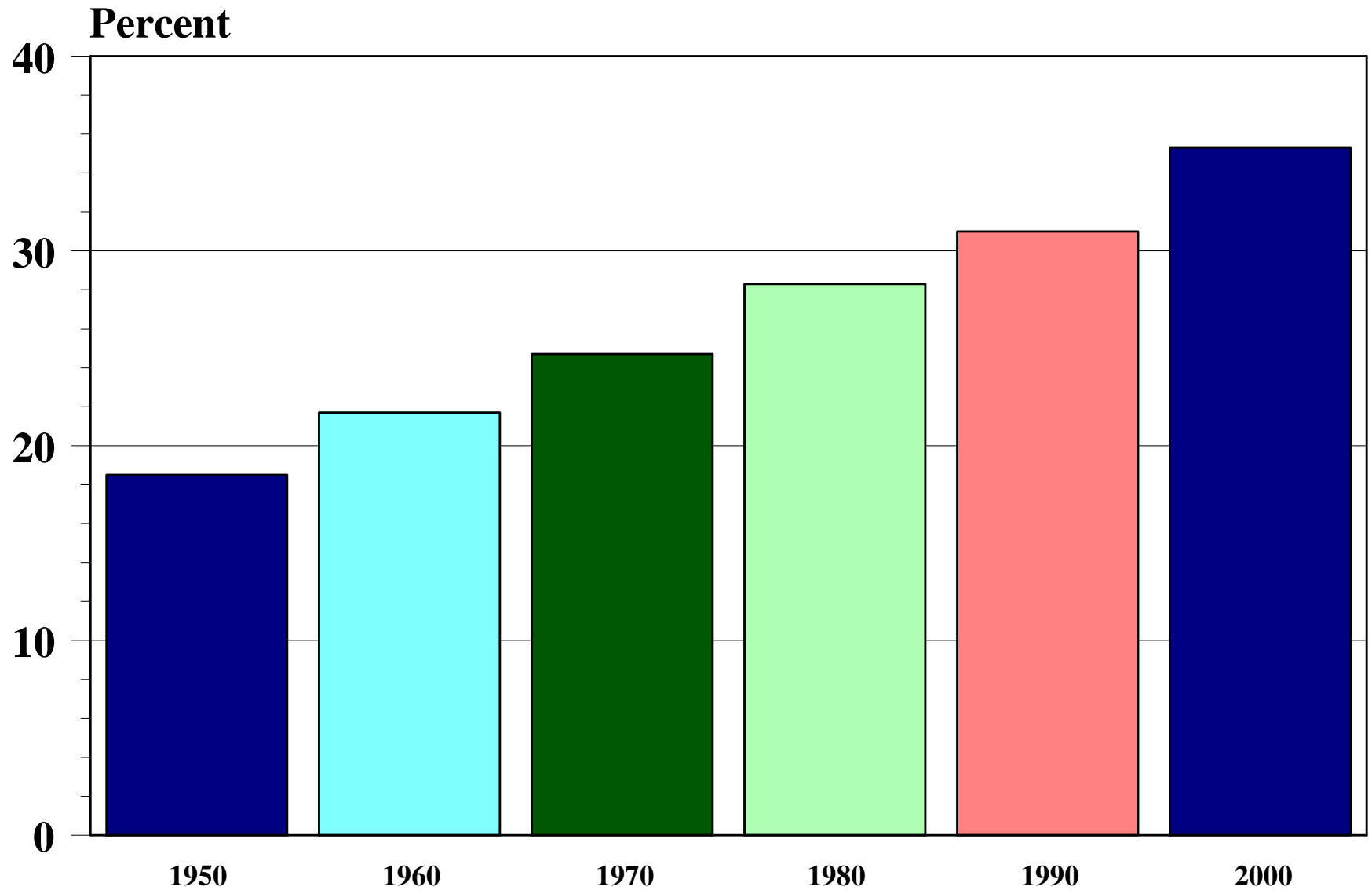


# Average Yearly Earnings by Sector , Age, and Education

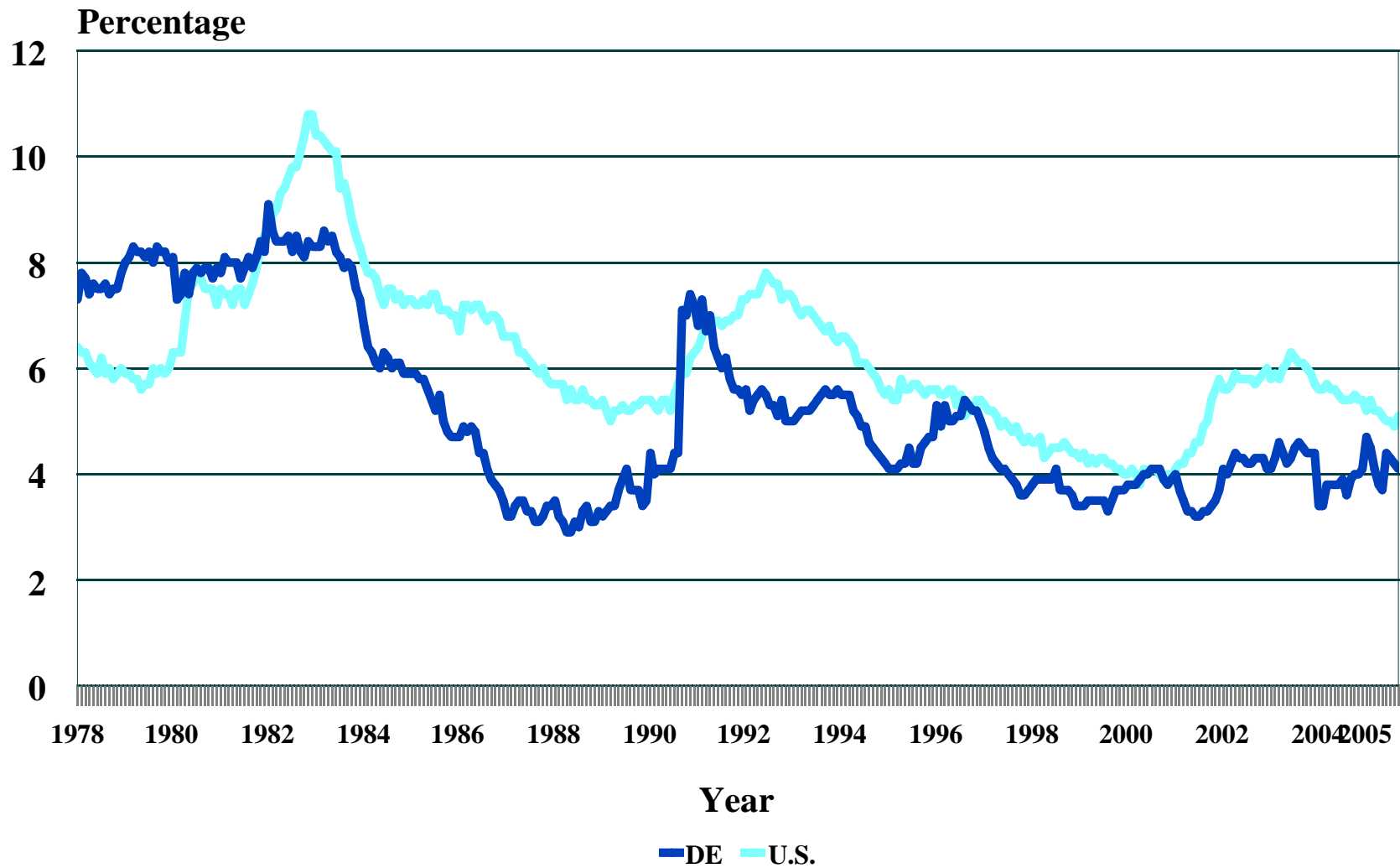


Source: Center for Applied Demography and Survey Research, University of Delaware

# Percent of Jobs Requiring a College Degree

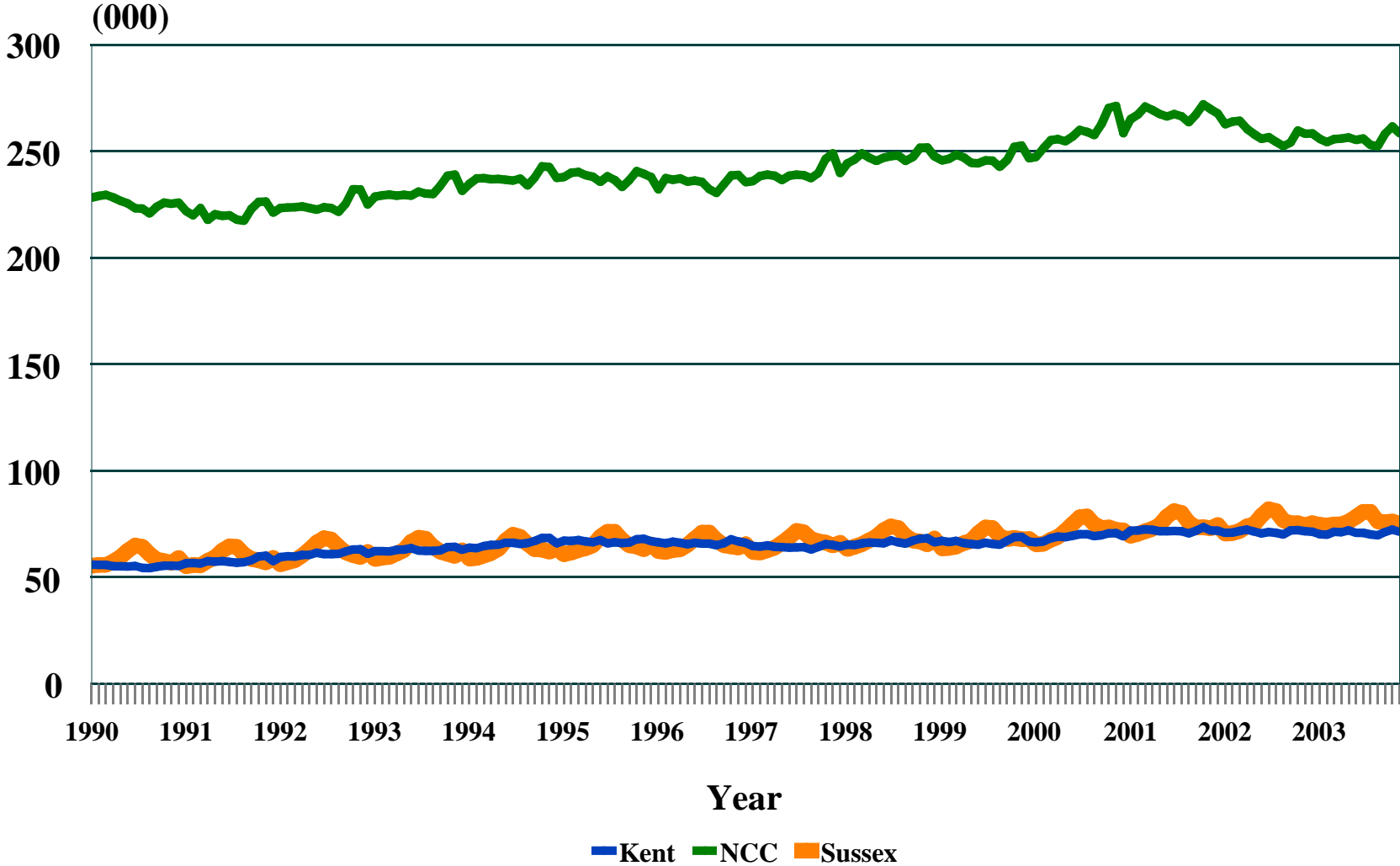


# Delaware Unemployment Rate 1978-2004



Source: Center for Applied Demography and Survey Research, University of Delaware, BLS.

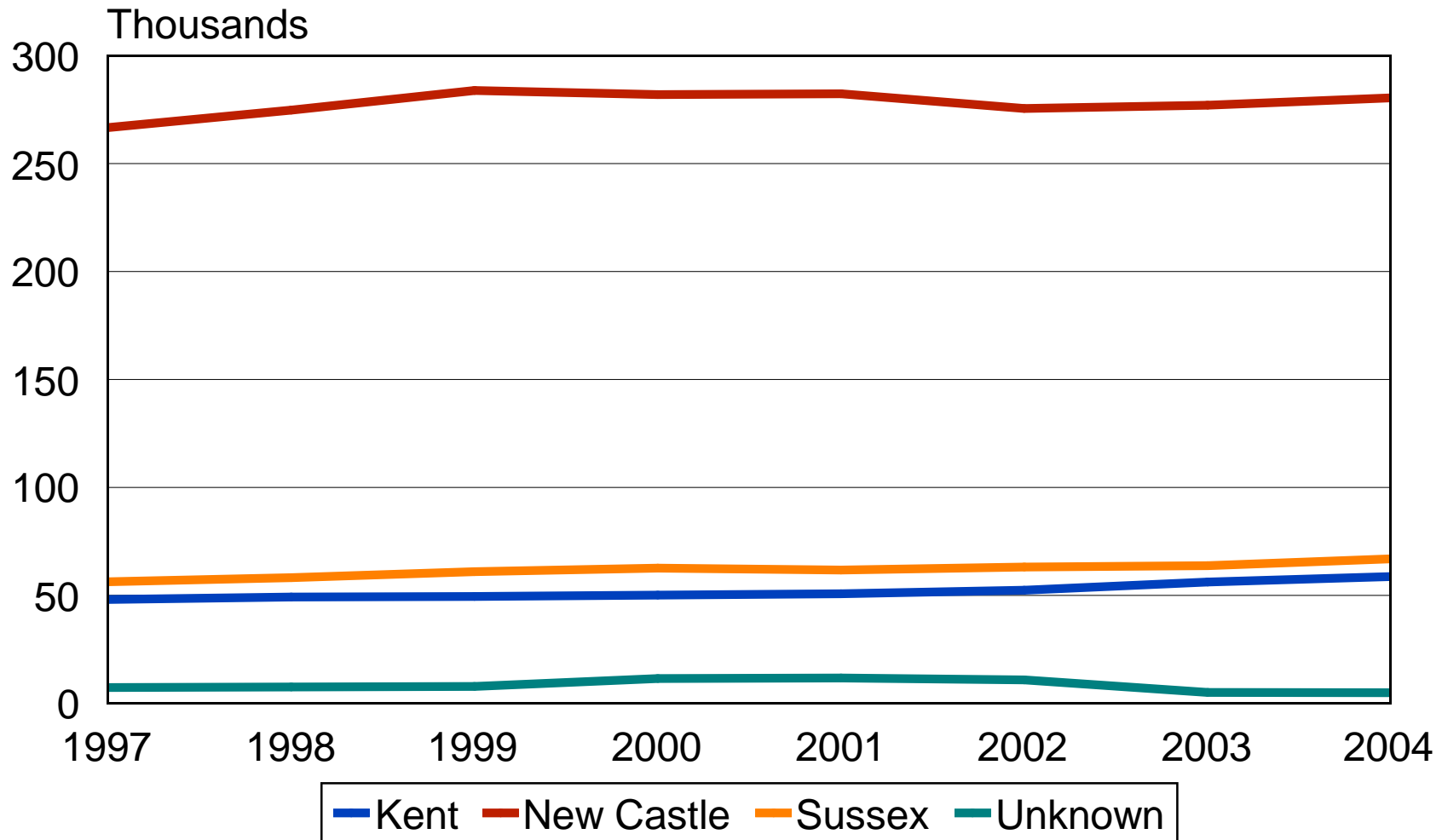
# County Employment 1990-2004



Source: Center for Applied Demography and Survey Research, University of Delaware, BLS.

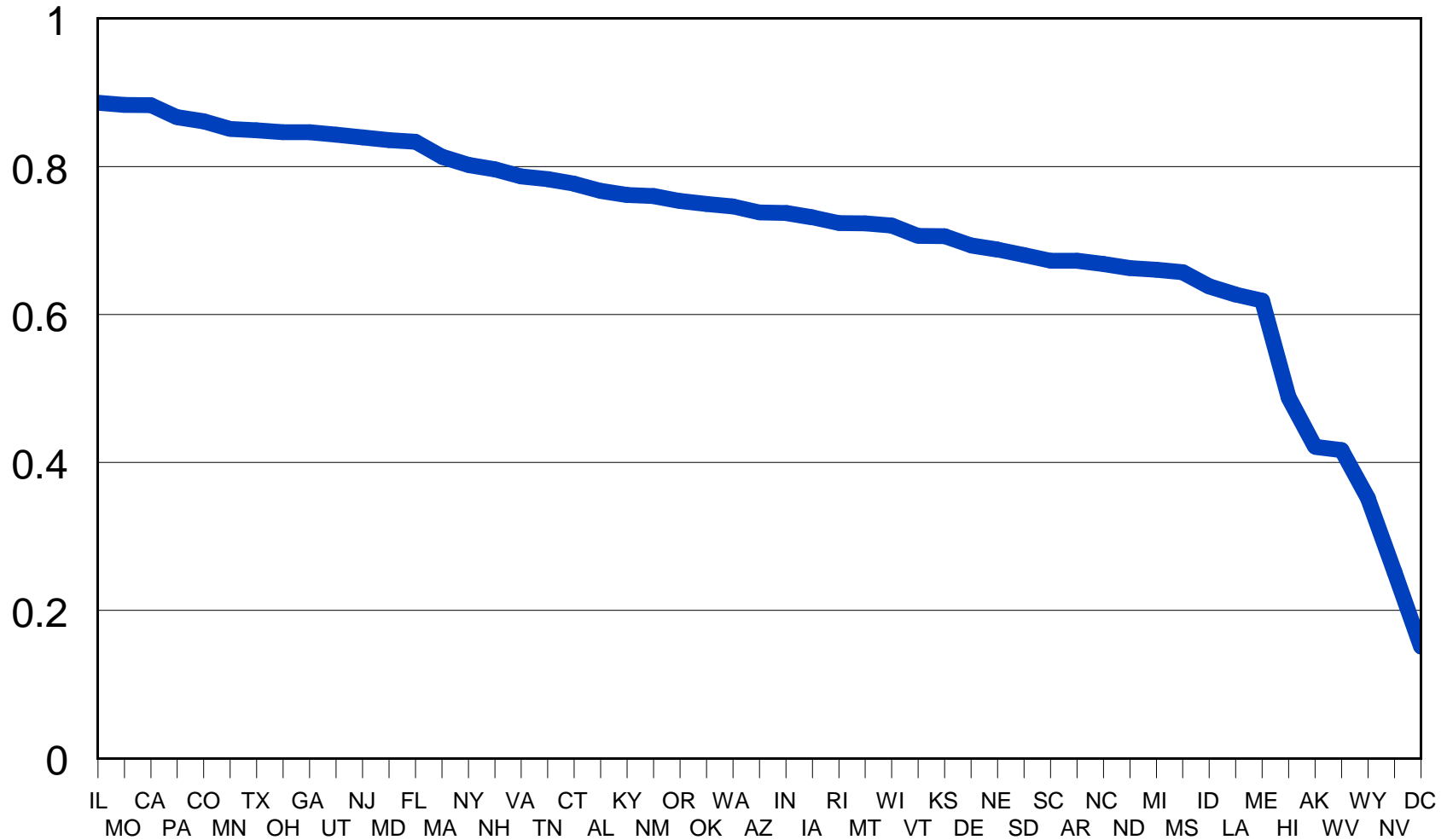
# County Employment

1997-2004



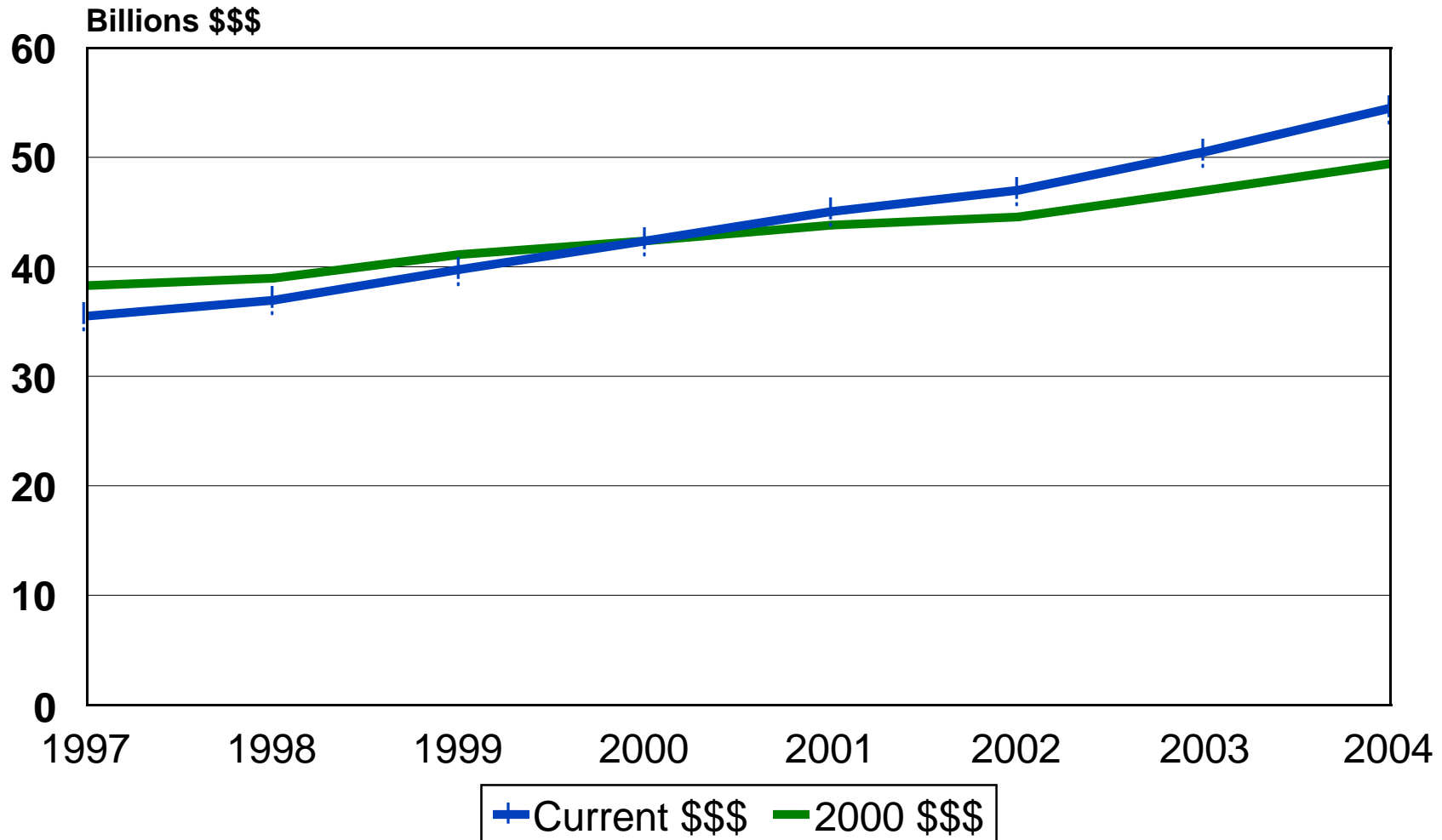
# Employment Diversity Index

by State - 2002



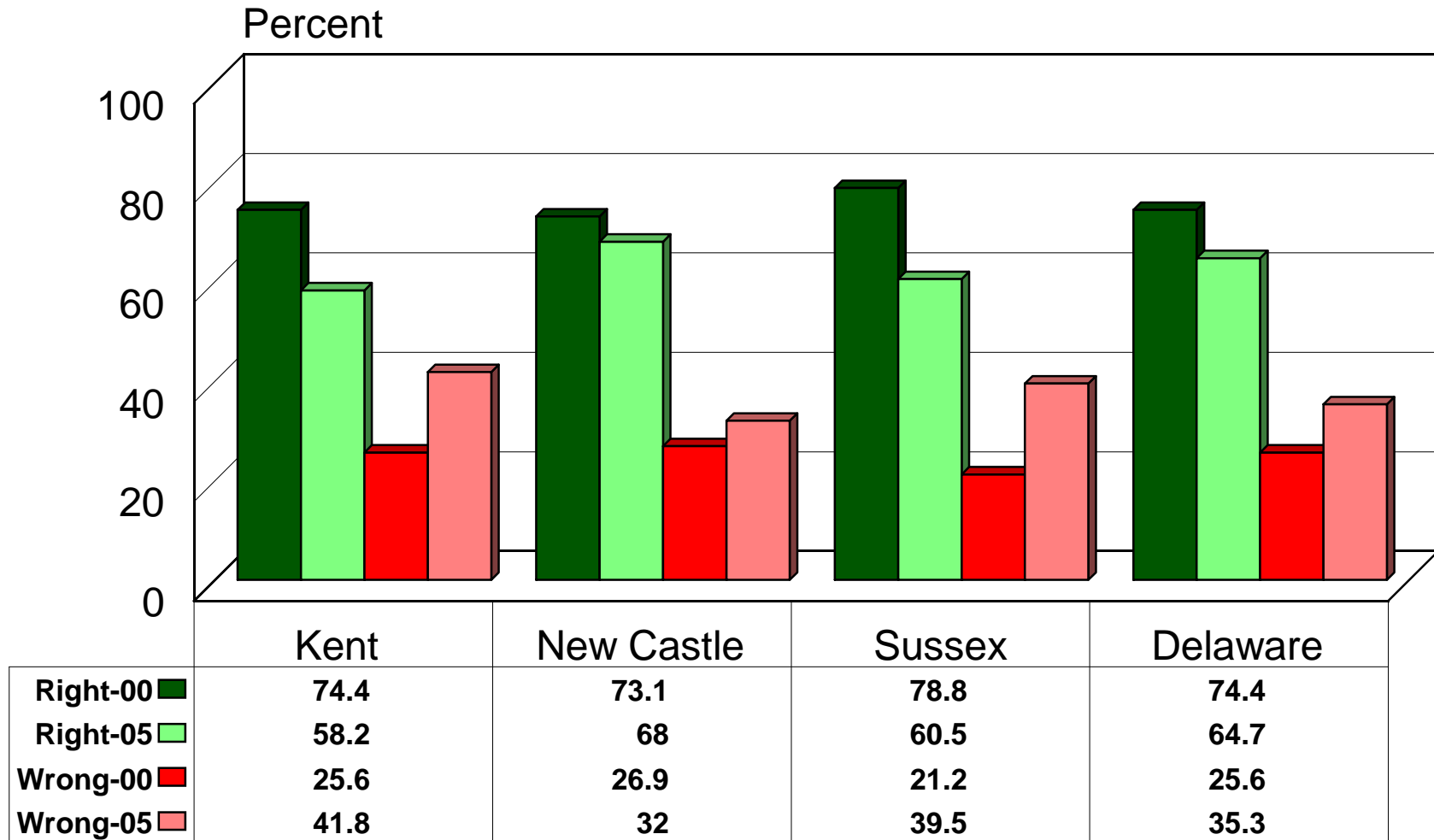
# Delaware Gross State Product 1997-2004

## Current and Real Dollars



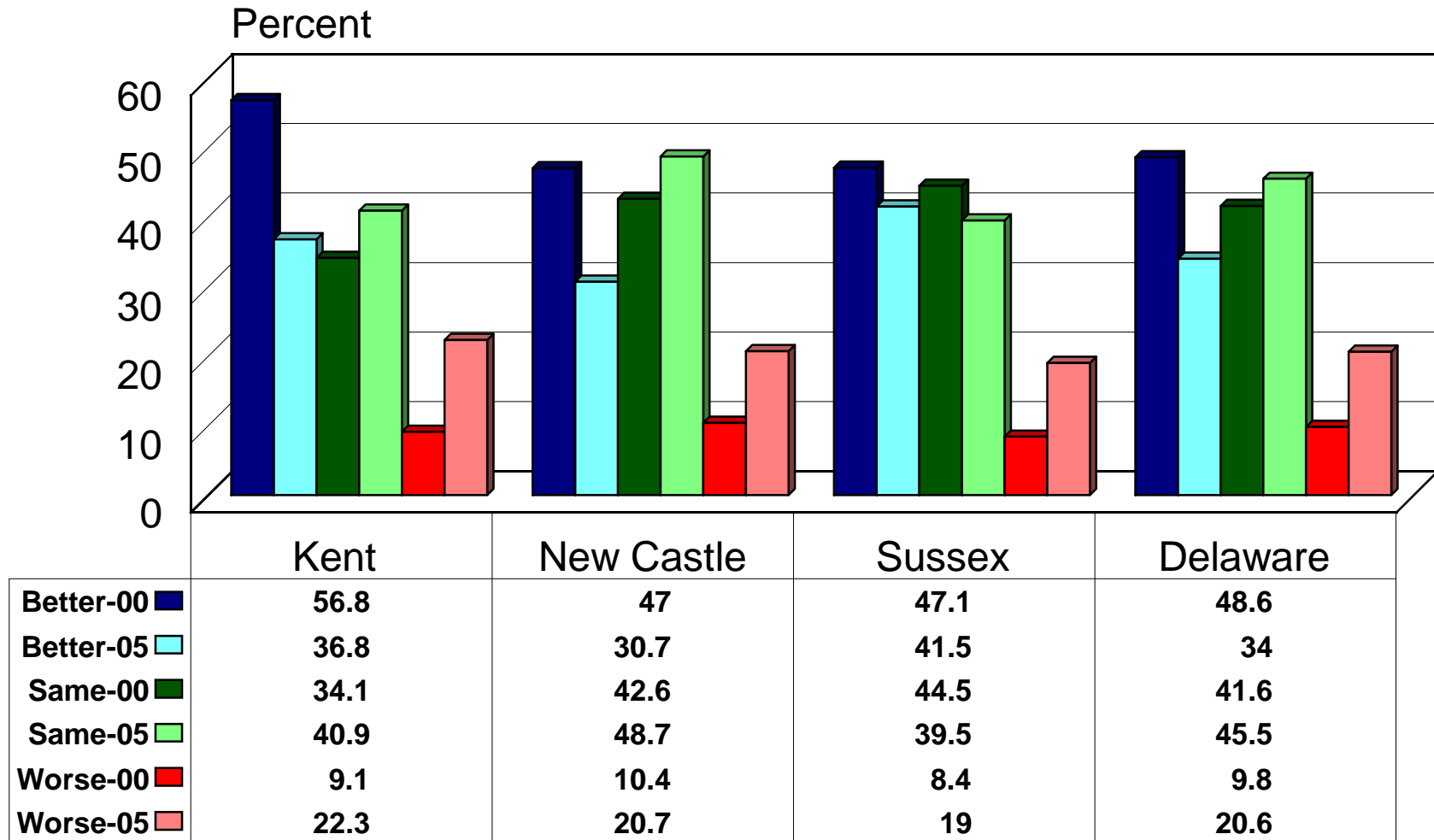
Source: Center for Applied Demography and Survey Research, University of Delaware, BEA.

# Do you Feel Delaware is on the Right or Wrong Track? by County 2000/2005



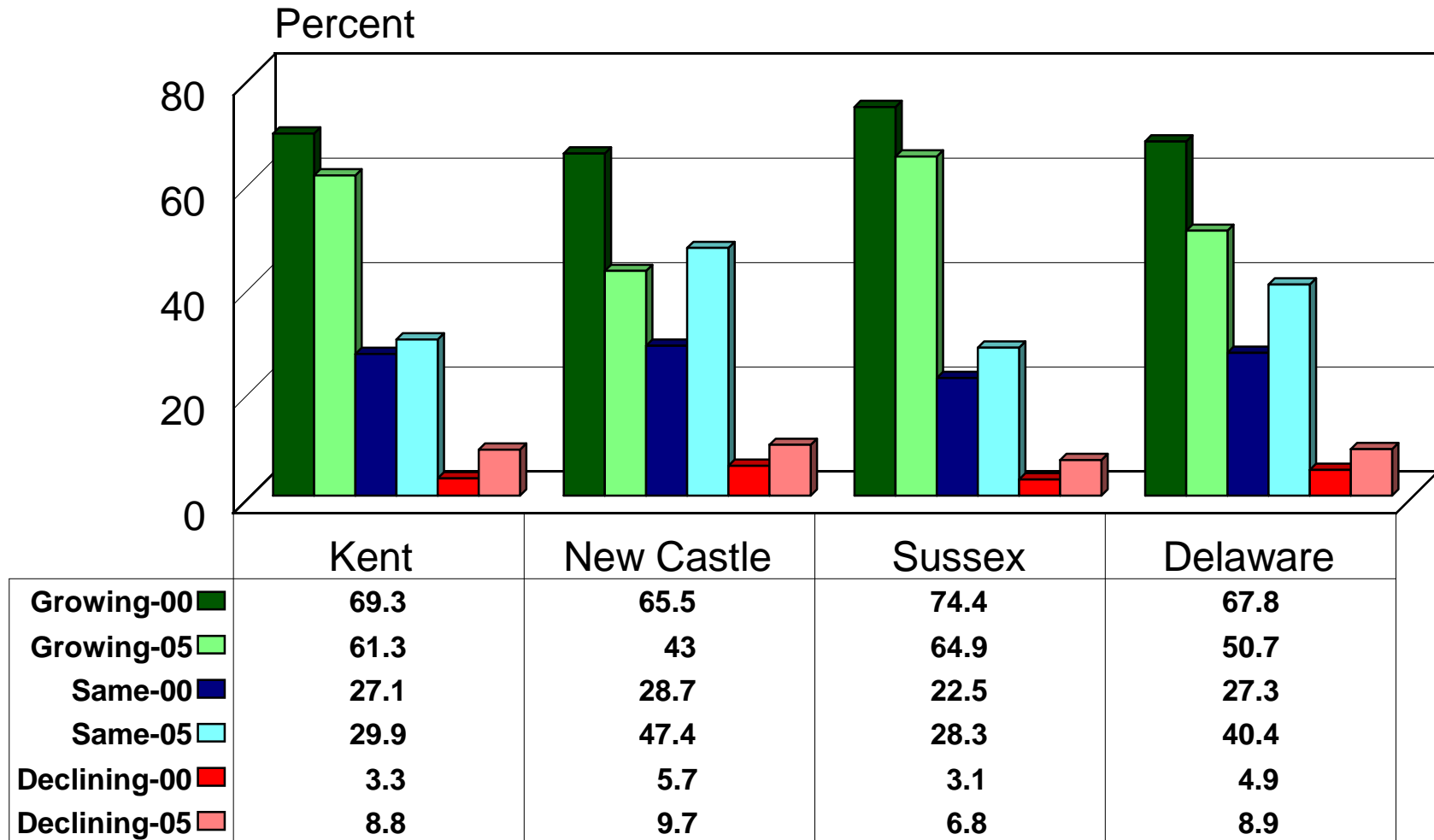
Source: Center for Applied Demography & Survey Research, University of Delaware

# Is Delaware Better Off than Five Years Ago? by County 2000/2005



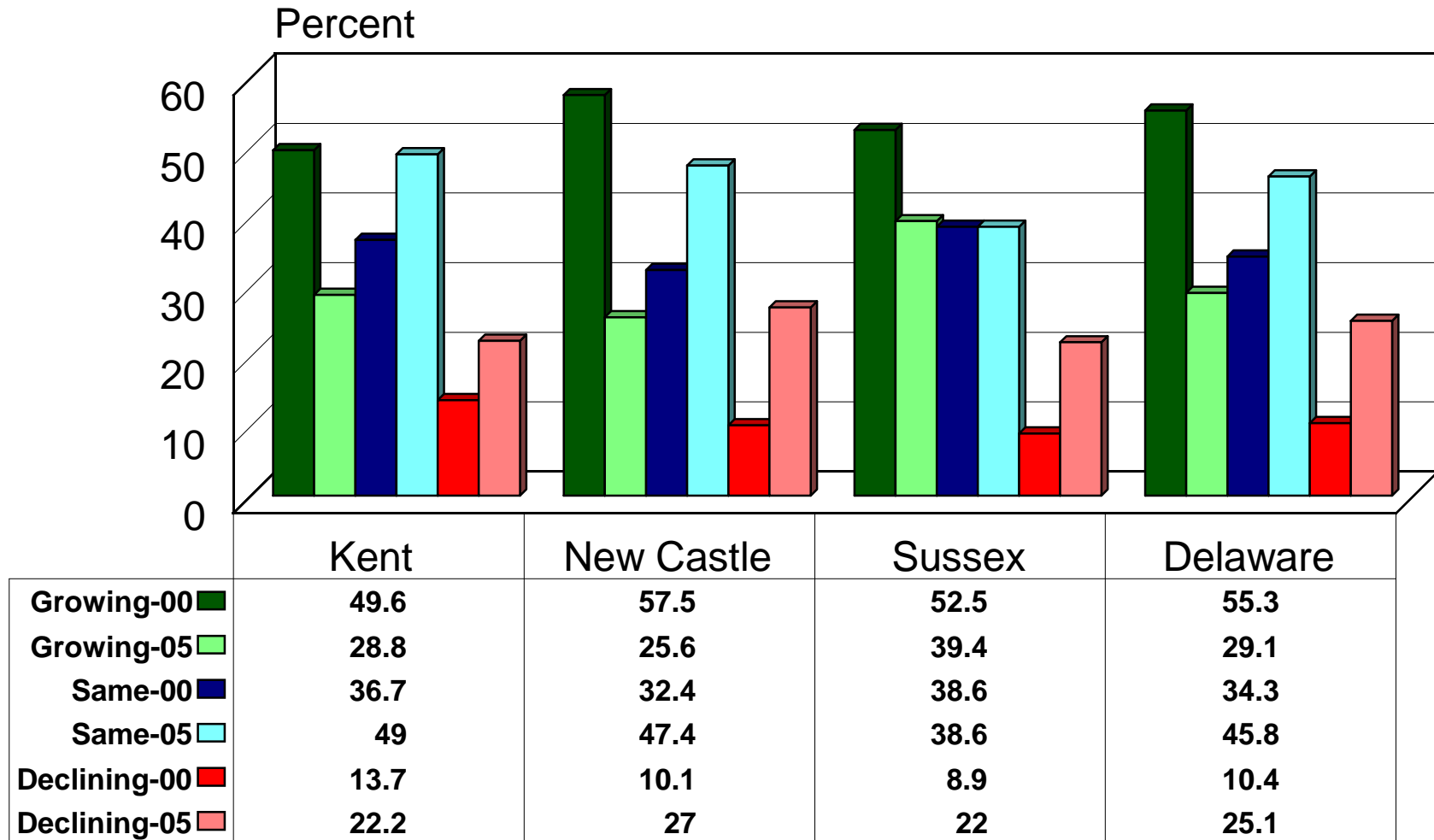
Source: Center for Applied Demography & Survey Research, University of Delaware

# How is Delaware's Economy Changing? by County 2000/2005



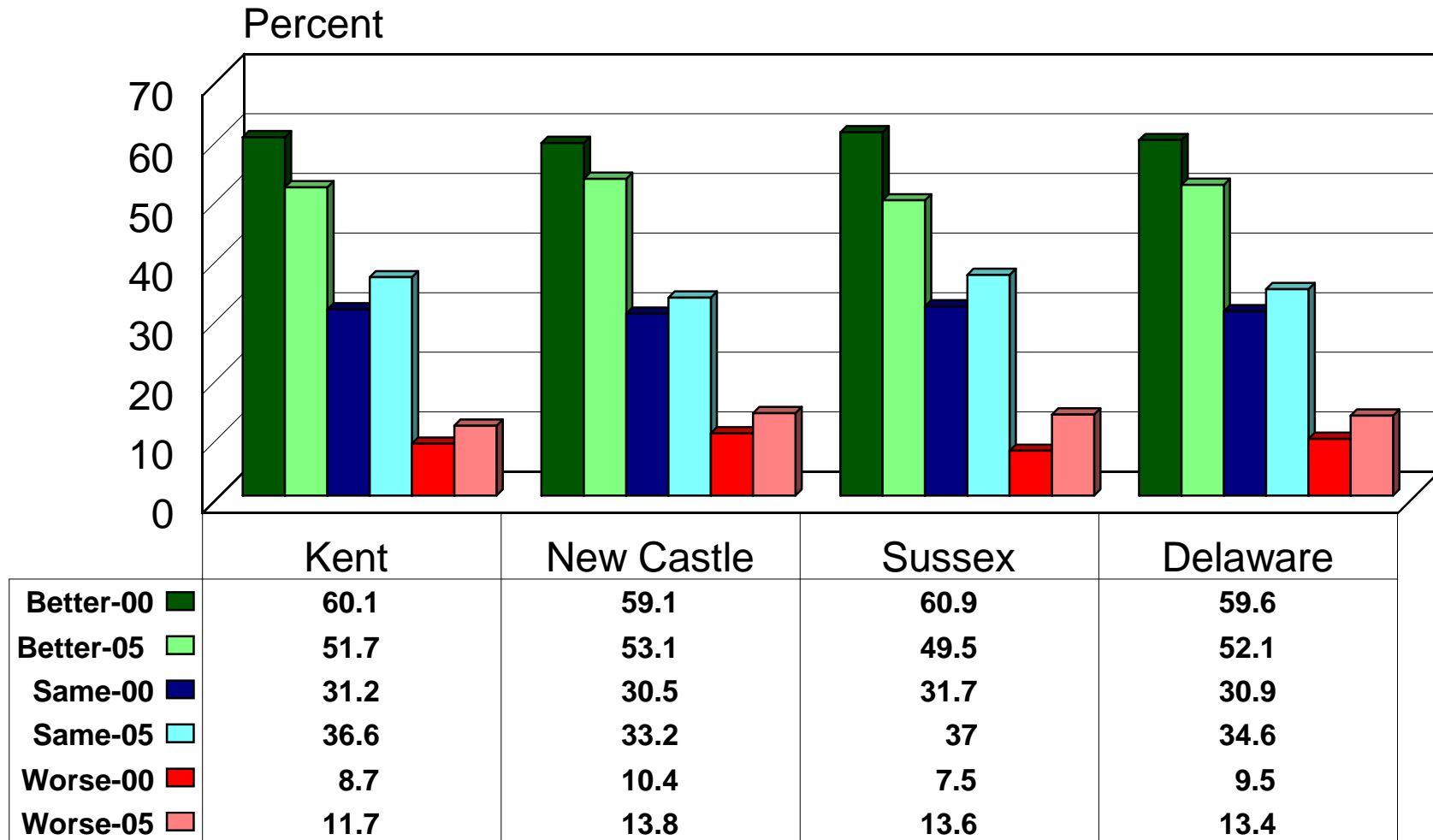
Source: Center for Applied Demography & Survey Research, University of Delaware

# How are Job Opportunities Changing? by County 2000/2005



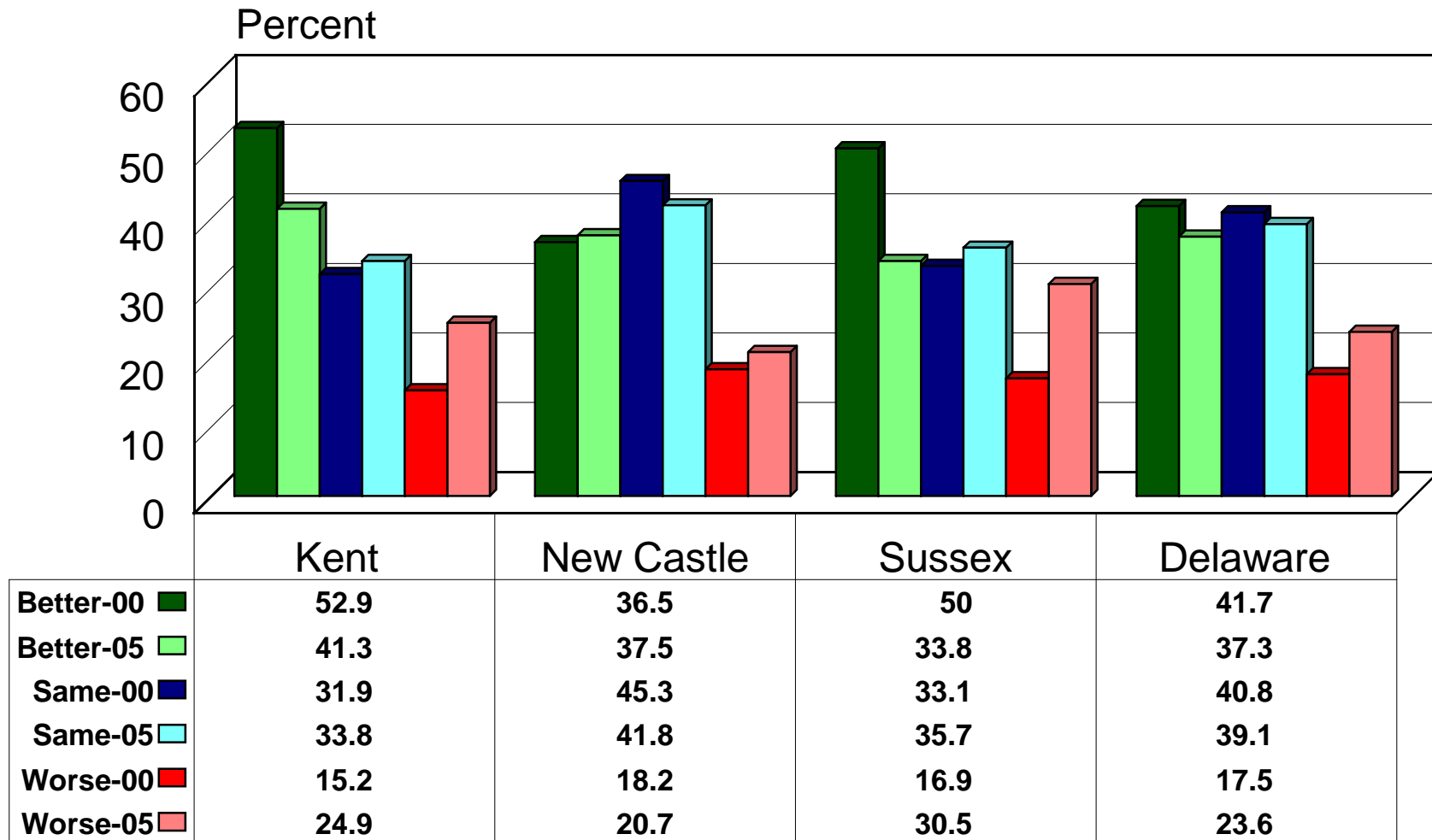
Source: Center for Applied Demography & Survey Research, University of Delaware

# Are You Better Off than Five Years Ago? by County 2000/2005



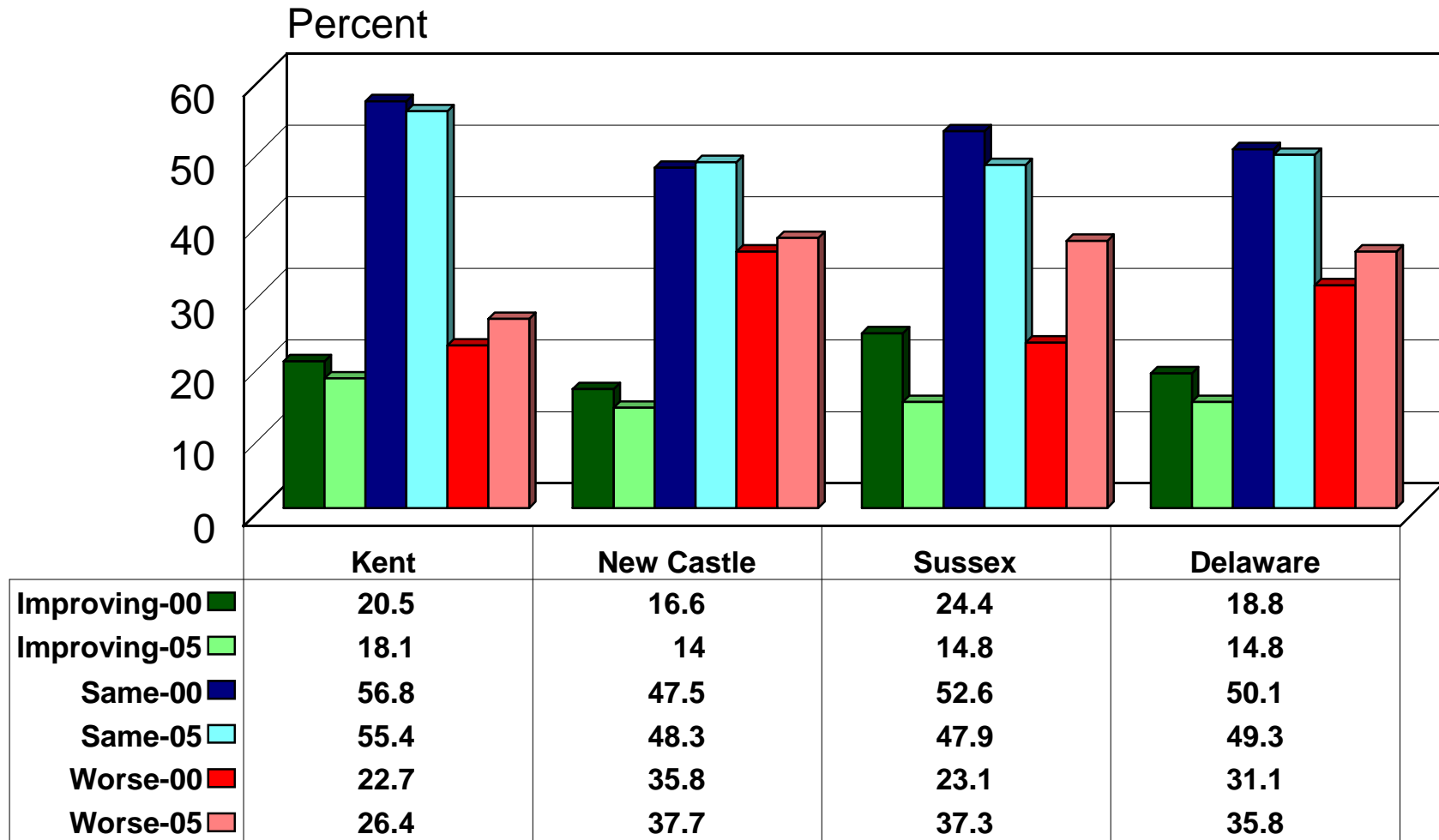
Source: Center for Applied Demography & Survey Research, University of Delaware

# Quality of Life in Delaware Five Years From Now by County 2000/2005



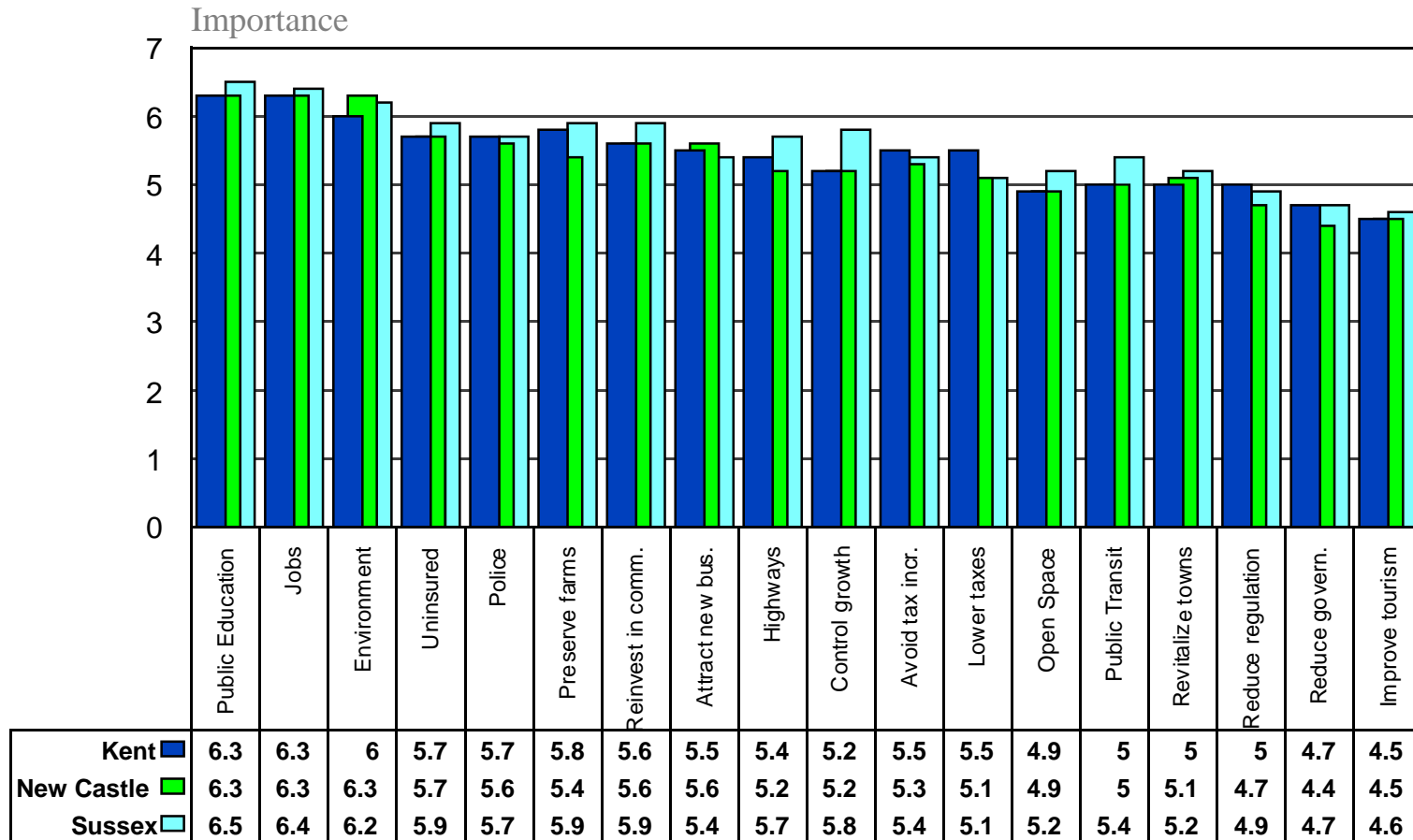
Source: Center for Applied Demography & Survey Research, University of Delaware

# How is the Environment Compared to Five Years Ago? by County 2000/2005



Source: Center for Applied Demography & Survey Research, University of Delaware

# State Priorities 2005 by Delaware's Direction



Source: Center for Applied Demography and Survey Research, University of Delaware